

MRPL48 antibody



Catalog Number: 112832

Product name

MRPL48 antibody

Specificity

Human, Mouse, Rat; other species not tested.

Antibody description

MRPL48 Rabbit Polyclonal antibody. Positive IHC detected in human pancreas cancer tissue. Positive WB detected in Jurkat cells, HeLa cells. Observed molecular weight by Western-blot: 20-21 kDa

Preparation

This antibody was obtained by immunization of MRPL48 recombinant protein (Accession Number: NM_016055). Purification method: Antigen affinity purified.

Formulation

PBS with 0.02% sodium azide and 50% glycerol pH 7.3.

Storage

Store at -20°C. DO NOT ALIQUOT

Clonality

Polyclonal

Ig Type

Rabbit IgG

Applications

ELISA, WB, IHC

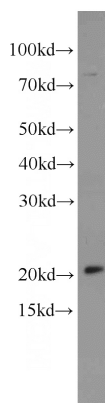
Dilutions

Recommended Dilution:

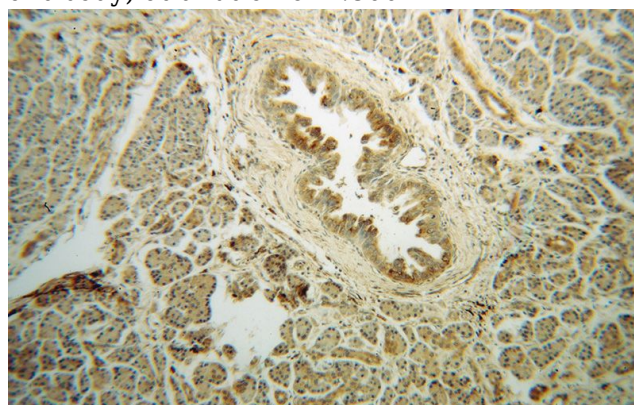
WB: 1:200-1:2000

IHC: 1:20-1:200

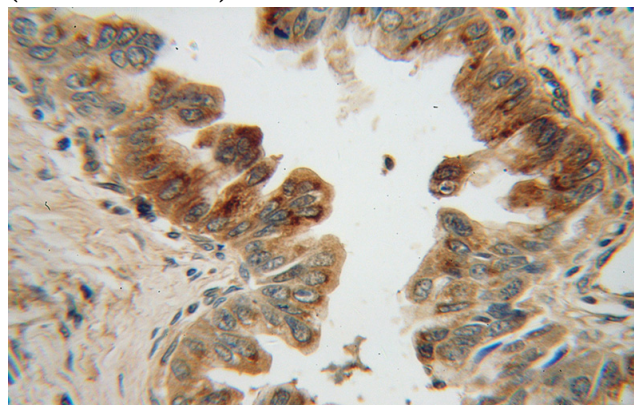
Validations



Jurkat cells were subjected to SDS PAGE followed by western blot with Catalog No:112832(MRPL48 antibody) at dilution of 1:800



Immunohistochemical of paraffin-embedded human pancreas cancer using Catalog No:112832(MRPL48 antibody) at dilution of 1:50 (under 10x lens)



Immunohistochemical of paraffin-embedded human pancreas cancer using Catalog

MRPL48 antibody



Catalog Number: 112832

No:112832(MRPL48 antibody) at dilution of 1:50 (under 40x lens)