

# IRF2 antibody

Catalog Number: 111832

## Product name

IRF2 antibody

IP: 1:200-1:2000

IHC: 1:20-1:200

## Specificity

Human, Mouse, Rat; other species not tested.

## Antibody description

IRF2 Rabbit Polyclonal antibody. Positive WB detected in Jurkat cells, COLO 320 cells, mouse colon tissue. Positive IP detected in Jurkat cells. Positive IHC detected in human colon cancer tissue. Observed molecular weight by Western-blot: 50 kDa

## Preparation

This antibody was obtained by immunization of IRF2 recombinant protein (Accession Number: NM\_002199). Purification method: Antigen affinity purified.

## Formulation

PBS with 0.02% sodium azide and 50% glycerol pH 7.3.

## Storage

Store at -20°C. DO NOT ALIQUOT

## Clonality

Polyclonal

## Ig Type

Rabbit IgG

## Applications

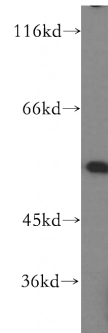
ELISA, WB, IHC, IP

## Dilutions

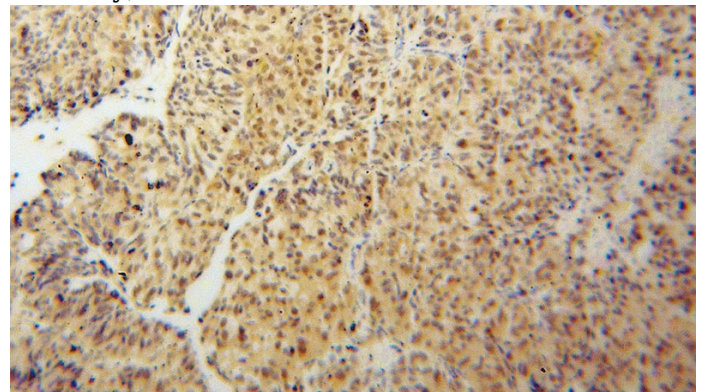
Recommended Dilution:

WB: 1:200-1:2000

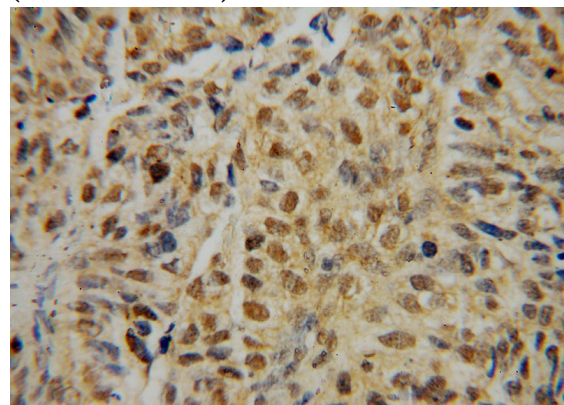
## Validations



Jurkat cells were subjected to SDS PAGE followed by western blot with Catalog No:111832(IRF2 antibody) at dilution of 1:500



Immunohistochemical of paraffin-embedded human colon cancer using Catalog No:111832(IRF2 antibody) at dilution of 1:50 (under 10x lens)



Immunohistochemical of paraffin-embedded

# IRF2 antibody

Catalog Number: 111832

human colon cancer using Catalog No:111832(IRF2 antibody) at dilution of 1:50 (under 40x lens)

IP Result of anti-IRF2 (IP:Catalog No:111832, 4ug; Detection:Catalog No:111832 1:500) with Jurkat cells lysate 2800ug.

