

# Bcl-XL antibody



Catalog Number: 108432

## Product name

Bcl-XL antibody

## Immunogen

[Human Bcl-xL Recombinant protein \(GST tag\)](#)

## Specificity

Human, Mouse; other species not tested.

## Antibody description

Bcl-XL Rabbit Polyclonal antibody. Positive WB detected in C6 cells, A549 cells, human placenta tissue, Jurkat cells, K-562 cells, mouse placenta tissue, NIH/3T3 cells, Raji cells, RAW264.7 cells. Positive IP detected in K-562 cells. Positive IF detected in NIH/3T3 cells. Positive IHC detected in human lung cancer tissue, human colon cancer tissue. Positive FC detected in Jurkat cells. Observed molecular weight by Western-blot: 30-35 kDa

## Preparation

This antibody was obtained by immunization of Bcl-XL recombinant protein (Accession Number: XM\_011528964). Purification method: Antigen affinity purified.

## Formulation

PBS with 0.1% sodium azide and 50% glycerol pH 7.3.

## Storage

Store at -20°C. DO NOT ALIQUOT

## Clonality

Polyclonal

## Ig Type

Rabbit IgG

## Applications

ELISA, IP, IF, WB, IHC, FC

## Dilutions

Recommended Dilution:

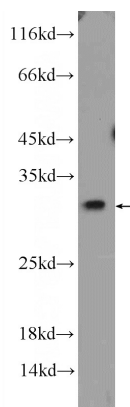
WB: 1:500-1:5000

IP: 1:200-1:2000

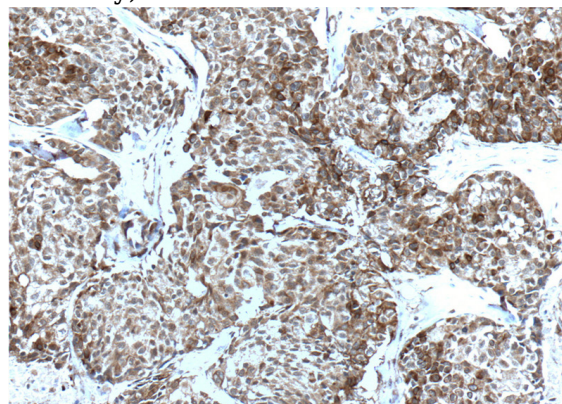
IHC: 1:50-1:500

IF: 1:10-1:100

## Validations



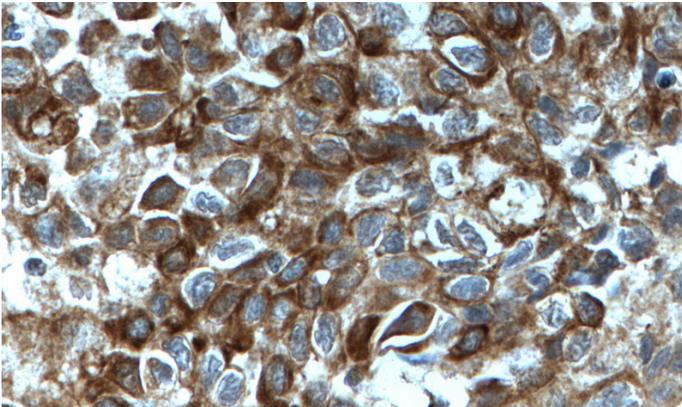
C6 cells were subjected to SDS PAGE followed by western blot with Catalog No:117105(Bcl-xL Antibody) at dilution of 1:1000



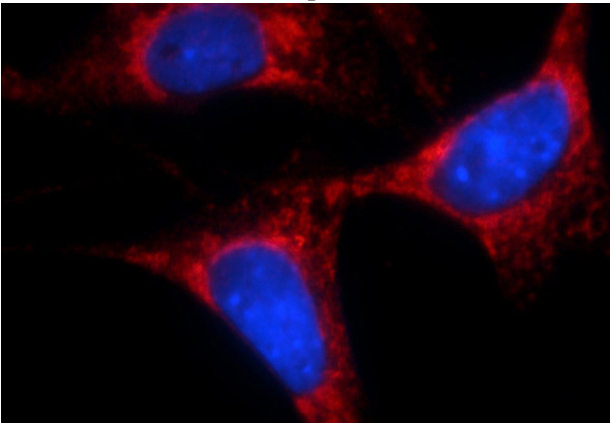
Immunohistochemistry of paraffin-embedded human lung cancer tissue slide using Catalog No:117105(Bcl-xL Antibody) at dilution of 1:200 (under 10x lens). heat mediated antigen retrieved with Tris-EDTA buffer(pH9).

# Bcl-XL antibody

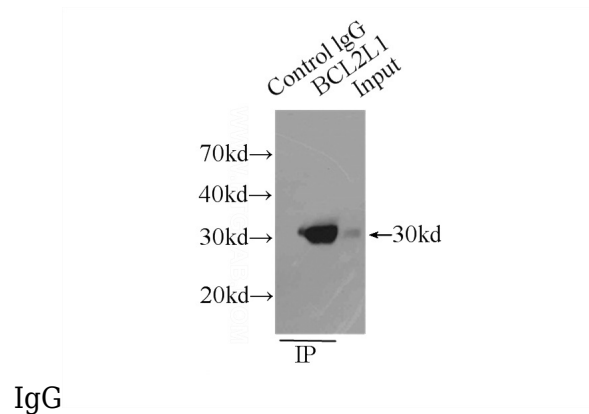
Catalog Number: 108432



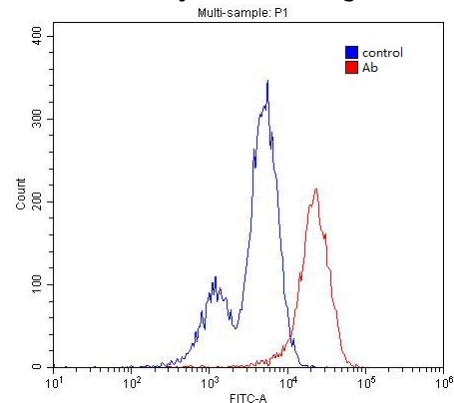
Immunohistochemistry of paraffin-embedded human lung cancer tissue slide using Catalog No:117105(Bcl-xL Antibody) at dilution of 1:200 (under 40x lens). heat mediated antigen retrieved with Tris-EDTA buffer(pH9).



Immunofluorescent analysis of NIH/3T3 cells using Catalog No:117105(Bcl-xL Antibody) at dilution of 1:25 and Rhodamine-Goat anti-Rabbit IgG.



IP Result of anti-Bcl-xL (IP:Catalog No:117105, 3ug; Detection:Catalog No:117105 1:500) with K-562 cells lysate 8000ug.



1X10<sup>6</sup> Jurkat cells were stained with 0.2ug Bcl-xL antibody (Catalog No:117105, red) and control antibody (blue). Fixed with 4% PFA blocked with 3% BSA (30 min). Alexa Fluor 488-conjugated AffiniPure Goat Anti-Rabbit IgG(H+L) with dilution 1:1500.