

# Anti-Gastric intrinsic factor / GIF antibody



Catalog Number: 106432

## Product name

Anti-Gastric intrinsic factor / GIF antibody

## Immunogen

[Human Gastric intrinsic factor / GIF \(His Tag\) recombinant protein](#)

## Specificity

Human Gastric intrinsic factor / GIF

## Antibody description

Rabbit monoclonal to Gastric intrinsic factor / GIF

## Preparation

This antibody was obtained from a rabbit immunized with purified, recombinant Human Gastric intrinsic factor / GIF (rh Gastric intrinsic factor / GIF; P27352-1; Met1-Tyr417).

## Formulation

0.2 µm filtered solution in PBS

## Storage

This antibody can be stored at 2°C-8°C for one month without detectable loss of activity. Antibody products are stable for twelve months from date of receipt when stored at -20°C to -80°C.

Preservative-Free.

Sodium azide is recommended to avoid contamination (final concentration 0.05%-0.1%). It is toxic to cells and should be disposed of

properly. Avoid repeated freeze-thaw cycles.

## Clonality

Monoclonal

## Ig Type

Rabbit IgG

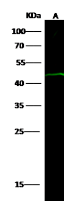
## Applications

WB

## Dilutions

WB: 10-20 µg/ml

## Validations



Items	Lanes
Sample (whole cell lysate)	A
Sample Volume (µg/lane)	K562 30
Gel	13% SDS-PAGE reducing gel
Recommended Concentration	10-20 µg/ml
Secondary Antibody	DyLight 800 labeled Antibody to Rabbit IgG (H+L), at 1:5000 dilution. Developed using Odyssey imaging system.
Explanation	Predicted band size : 45 kDa Observed band size : 45 kDa

Gastric intrinsic factor / GIF Antibody, Rabbit MAbs, Western blot

Immunochemical staining of human STX3 in human kidney with rabbit polyclonal antibody (0.5 µg/mL, formalin-fixed paraffin embedded sections).