

General Information

Protein Construction

A DNA sequence encoding the cynomolgus IL21R (XP_005591578.1) (Met1-Pro236) was expressed with the Fc region of human IgG1 at the C-terminus. Cynomolgus and Rhesus IL21R sequences are identical.

Organism

Cynomolgus

Expression Host

Human Cells

QC Testing

Activity

1. Measured by its binding ability in a functional ELISA.
2. Immobilized human IL21 (Cat:501827) at 10 µg/mL (100 µL/well) can bind Cynomolgus IL21R-Fc. The EC₅₀ of Cynomolgus IL21R-Fc is 0.11-0.25 µg/mL.

Purity

> 90 % as determined by SDS-PAGE.

Endotoxin

<1.0 EU per µg protein as determined by the LAL method.

Stability

Samples are stable for up to twelve months from date of receipt at -70°C

Predicted N terminal

Cys 20

Molecular Mass

The recombinant cynomolgus IL21R consists 458 amino acids and predicts a molecular mass of 52 kDa.

Formulation

Lyophilized from sterile PBS, pH 7.4.

1. 5 % trehalose and mannitol are added as protectants before lyophilization.
2. Please contact us for any concerns or special requirements.

Usage Guide

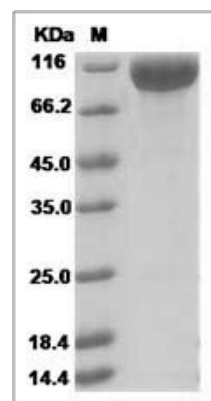
Storage

Store it under sterile conditions at -20°C to -80°C. It is recommended that the protein be aliquoted for optimal storage. Avoid repeated freeze-thaw cycles.

Reconstitution

Adding sterile water, prepare a stock solution of 0.25 mg/ml. Concentration is measured by UV-Vis.

SDS-PAGE



Cynomolgus / Rhesus IL21R / IL-21R Protein (Fc Tag) SDS-PAGE