

Human CECR1 / Adenosine Deaminase 2 (His Tag) recombinant protein



Catalog Number: 502032

General Information

Gene Name Synonym

Cat eye syndrome critical region protein 1

Protein Construction

A DNA sequence encoding the human CECR1 (AAH51755.1) (Met1-Lys511) was expressed with a C-terminal polyhistidine tag.

Organism

Human

Expression Host

Baculovirus-Insect Cells

QC Testing

Purity

> 90 % as determined by SDS-PAGE

Endotoxin

< 1.0 EU per μg of the protein as determined by the LAL method

Stability

Samples are stable for up to twelve months from date of receipt at -70°C

Predicted N terminal

Ile 30

Molecular Mass

The secreted recombinant human CECR1 consists

of 492 amino acids and predicts a molecular mass of 57.3 KDa. The apparent molecular mass of the protein is approximately 58 KDa in SDS-PAGE under reducing conditions.

Formulation

Lyophilized from sterile 20mM Tris, 500mM NaCl, 10% glycerol, pH 8.0.

1. 5 % trehalose and mannitol are added as protectants before lyophilization.
2. Please contact us for any concerns or special requirements.

Usage Guide

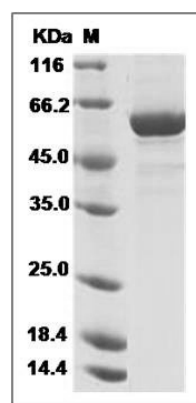
Storage

Store it under sterile conditions at -20°C to -80°C . It is recommended that the protein be aliquoted for optimal storage. Avoid repeated freeze-thaw cycles.

Reconstitution

Adding sterile water, prepare a stock solution of 0.25 mg/ml. Concentration is measured by UV-Vis.

SDS-PAGE



Human CECR1 / ADA2 Protein (His Tag) SDS-PAGE