

# DTL antibody

Catalog Number: 110032

## Product name

DTL antibody

## Specificity

Human, Mouse, Rat; other species not tested.

## Antibody description

DTL Rabbit Polyclonal antibody. Positive WB detected in HeLa cells, L02 cells, MCF7 cells. Positive IP detected in mouse testis tissue. Observed molecular weight by Western-blot: 79kd

## Preparation

This antibody was obtained by immunization of DTL recombinant protein (Accession Number: NM\_016448). Purification method: Antigen affinity purified.

## Formulation

PBS with 0.02% sodium azide and 50% glycerol pH 7.3.

## Storage

Store at -20°C. DO NOT ALIQUOT

## Clonality

Polyclonal

## Ig Type

Rabbit IgG

## Applications

ELISA, WB, IP

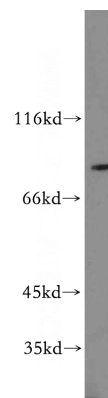
## Dilutions

Recommended Dilution:

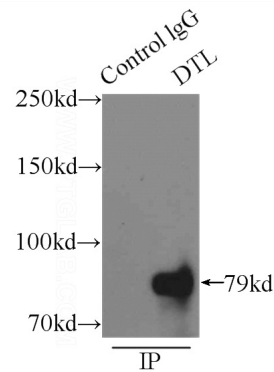
WB: 1:200-1:1000

IP: 1:200-1:2000

## Validations



HeLa cells were subjected to SDS PAGE followed by western blot with Catalog No:110032(DTL antibody) at dilution of 1:200



IP Result of anti-DTL (IP:Catalog No:110032, 3ug; Detection:Catalog No:110032 1:500) with mouse testis tissue lysate 8000ug.