

ATPB antibody

Catalog Number: 108322

Product name

ATPB antibody

Specificity

Human, Mouse, Rat; other species not tested.

Antibody description

ATPB Rabbit Polyclonal antibody. Positive IP detected in mouse heart tissue. Positive WB detected in human heart tissue, HeLa cells, HepG2 cells, mouse liver tissue, rat heart tissue, rat liver tissue. Positive IF detected in HeLa cells. Positive IHC detected in human liver tissue. Observed molecular weight by Western-blot: 56 kDa

Preparation

This antibody was obtained by immunization of ATPB recombinant protein (Accession Number: NM_001686). Purification method: Antigen affinity purified.

Formulation

PBS with 0.02% sodium azide and 50% glycerol pH 7.3.

Storage

Store at -20°C. DO NOT ALIQUOT

Clonality

Polyclonal

Ig Type

Rabbit IgG

Applications

ELISA, WB, IHC, IP, IF

Dilutions

Recommended Dilution:

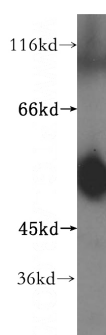
WB: 1:500-1:5000

IP: 1:200-1:2000

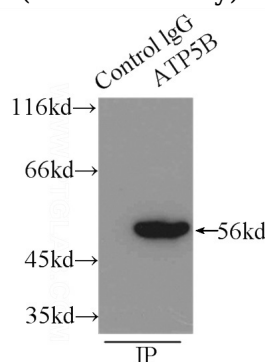
IHC: 1:20-1:200

IF: 1:20-1:200

Validations



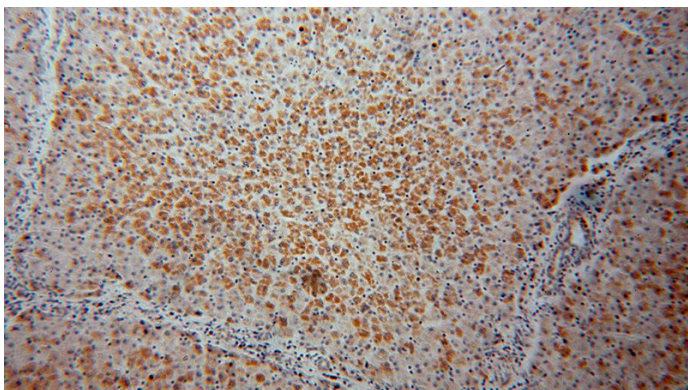
human heart tissue were subjected to SDS PAGE followed by western blot with Catalog No:108322(ATPB antibody) at dilution of 1:500



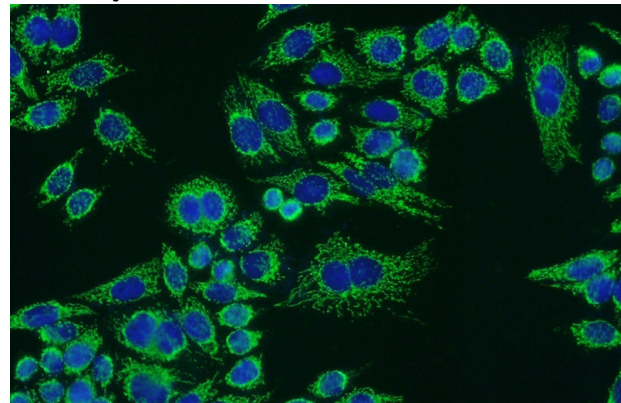
IP Result of anti-ATPB (IP:Catalog No:108322, 3ug; Detection:Catalog No:108322 1:500) with mouse heart tissue lysate 7500ug.

ATPB antibody

Catalog Number: 108322



Immunohistochemical of paraffin-embedded human liver using Catalog No:108322(ATPB antibody) at dilution of 1:100 (under 40x lens)



Immunofluorescent analysis of HeLa cells using Catalog No:108322(ATPB Antibody) at dilution of 1:50 and Alexa Fluor 488-conjugated AffiniPure Goat Anti-Rabbit IgG(H+L)

Immunohistochemical of paraffin-embedded human liver using Catalog No:108322(ATPB antibody) at dilution of 1:100 (under 10x lens)

