

# Human IL-1F6 (aa 6-158) recombinant protein



Catalog Number: 503322

## General Information

### Gene Name Synonym

FIL1 epsilon; Interleukin-1 epsilon; Interleukin-1 family member 6

### Protein Construction

A DNA sequence encoding the human IL1F6 (Q9UHA7) (Ala6-Phe158) was expressed and purified, with two additional amino acids (Gly & Pro) at the N-terminus.

### Organism

Human

### Expression Host

E. coli

## QC Testing

### Purity

> 95 % as determined by SDS-PAGE

### Endotoxin

Please contact us for more information.

### Stability

Samples are stable for up to twelve months from date of receipt at -70°C

### Predicted N terminal

Gly

### Molecular Mass

The recombinant human IL1F6 consists of 155 amino acids and predicts a molecular mass of 17.2 KDa. It migrates as an approximately 18 KDa band in SDS-PAGE under reducing conditions.

### Formulation

Lyophilized from sterile PBS pH 7.4

1. 5 % trehalose and mannitol are added as protectants before lyophilization.
2. Please contact us for any concerns or special requirements.

## Usage Guide

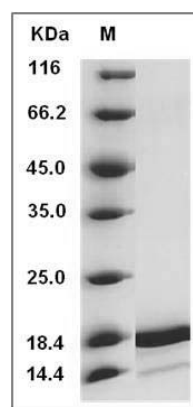
### Storage

Store it under sterile conditions at -20°C to -80°C. It is recommended that the protein be aliquoted for optimal storage. Avoid repeated freeze-thaw cycles.

### Reconstitution

Adding sterile water, prepare a stock solution of 0.25 mg/ml. Concentration is measured by UV-Vis.

### SDS-PAGE



Human IL1F6 / IL36 Protein (aa 6-158) SDS-PAGE