

Anti-ART1 / CD296 / ARTC1 antibody



Catalog Number: 101322

Product name

Anti-ART1 / CD296 / ARTC1 antibody

Immunogen

[Cynomolgus ART1 / CD296 / ARTC1 \(His Tag\) recombinant protein](#)

Specificity

Cynomolgus ART1 / CD296 / ARTC1

Antibody description

Rabbit polyclonal to ART1 / CD296 / ARTC1

Preparation

Produced in rabbits immunized with purified, recombinant Cynomolgus ART1 / CD296 / ARTC1 (XP_005579037.1; Gln23-Asn294). ART1 / CD296 / ARTC1 specific IgG was purified by Cynomolgus ART1 / CD296 / ARTC1 affinity chromatography.

Formulation

0.2 µm filtered solution in PBS

Storage

This antibody can be stored at 2°C-8°C for one month without detectable loss of activity. Antibody products are stable for twelve months from date of receipt when stored at -20°C to -80°C.

Preservative-Free.

Sodium azide is recommended to avoid contamination (final concentration 0.05%-0.1%). It is toxic to cells and should be disposed of properly. Avoid repeated freeze-thaw cycles.

Clonality

Polyclonal

Ig Type

Rabbit IgG

Applications

ELISA, IHC-P

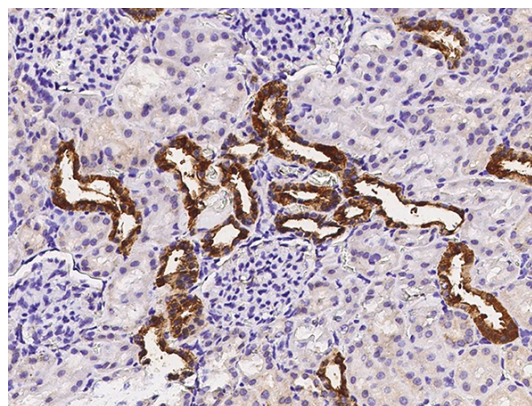
Dilutions

ELISA: 0.1-0.2 µg/ml

This antibody can be used at 0.1-0.2 µg/mL with the appropriate secondary reagents to detect Cynomolgus ART1 / CD296 / ARTC1.

IHC-P: 0.1-2 µg/ml

Validations



ART1 / CD296 / ARTC1 Antibody, Rabbit PAb, Antigen Affinity Purified, Immunohistochemistry

Immunochemical staining of cynomolgus ART1 in cynomolgus kidney with rabbit polyclonal antibody (0.5 µg/mL, formalin-fixed paraffin embedded sections).