

Product name

Anti- antibody

Specificity

Arabidopsis thaliana

Antibody description

Rabbit polyclonal antibody to

Preparation

This antigen of this antibody was synthetic peptide within a. *thaliana* ap-4 complex subunit mu aa 380-430 / 451.

Formulation

Liquid, 1*TBS (pH7.4), 0.2% BSA, 50% Glycerol.
Preservative: 0.05% Sodium Azide.

Storage

Store at +4°C after thawing. Aliquot store at -20°C. Avoid repeated freeze / thaw cycles.

Clonality

Polyclonal

Ig Type

Rabbit IgG

Applications

IF, IHC-P, ELISA

Dilutions

IF:1:50-1:100

IHC-P:1:50-1:200

ELISA:1:10,000

Validations

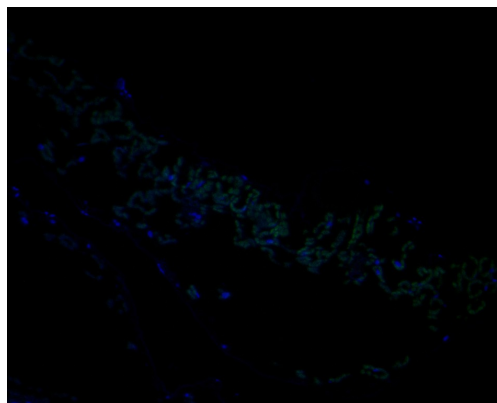


Fig1:: Immunofluorescence staining of paraffin-embedded *A. thaliana* using anti-AP-4 complex subunit mu rabbit polyclonal antibody. The section was pre-treated using heat mediated antigen retrieval with Tris-EDTA buffer (pH 9.0) for 20 minutes. The tissues were blocked in 10% negative goat serum for 1 hour at room temperature, washed with PBS, and then probed with AP-4 complex subunit mu antibody at 1/50 dilution for 10 hours at 4°C and detected using Alexa Fluor® 488 conjugate-Goat anti-Rabbit IgG (H+L) Secondary Antibody at a dilution of 1:500 for 1 hour at room temperature.

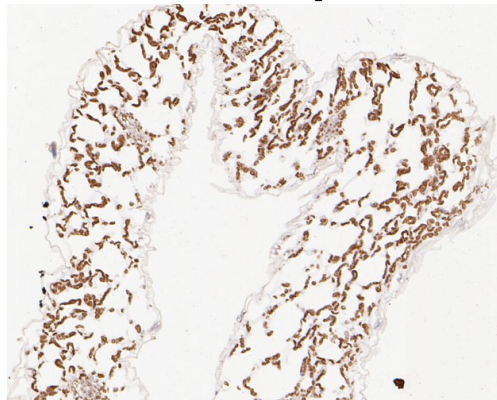


Fig2:: Immunohistochemical analysis of paraffin-embedded *A. thaliana* tissue using anti-AP-4 complex subunit mu antibody. The section was pre-treated using heat mediated antigen retrieval with Tris-EDTA buffer (pH 9.0) for 20 minutes. The tissues were blocked in 5% BSA for 30 minutes at room temperature, washed with ddH₂O and PBS, and then probed with the primary antibody (1/50) for 30 minutes at room temperature. The detection was performed using an HRP conjugated compact polymer system. DAB

was used as the chromogen. Tissues were

counterstained with hematoxylin and mounted with DPX.