

RPL13 Polyclonal Antibody



Catalog Number: 166622

Product name

RPL13 Polyclonal Antibody

WB 1:200 - 1:2000

IHC 1:50 - 1:200

IF 1:50 - 1:200

Specificity

Human, Mouse, Rat

Antibody description

Polyclonal antibody to RPL13

Preparation

Antigen: Recombinant fusion protein containing a sequence corresponding to amino acids 1-211 of human RPL13 (NP_150254.1).

Formulation

PBS with 0.02% sodium azide, 50% glycerol, pH7.3.

Storage

Store at -20°C. Avoid freeze / thaw cycles.

Clonality

Polyclonal

Ig Type

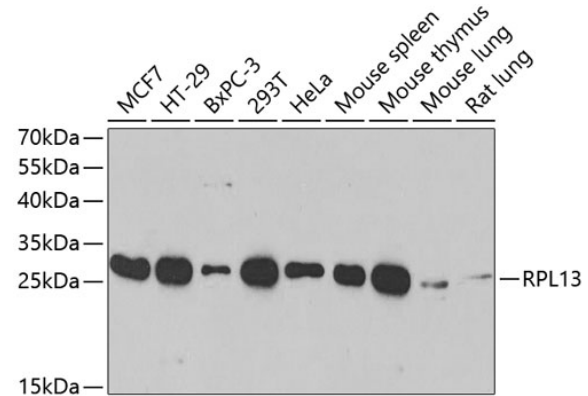
Rabbit IgG

Applications

WB, IHC, IF

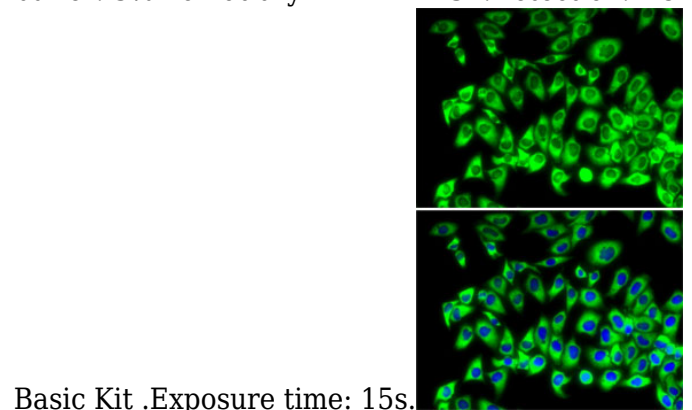
Dilutions

Validations



Western blot - RPL13 Polyclonal Antibody

Western blot analysis of extracts of various cell lines, using RPL13 antibody at 1:1000 dilution. Secondary antibody: HRP Goat Anti-Rabbit IgG (H+L) at 1:10000 dilution. Lysates/proteins: 25ug per lane. Blocking buffer: 3% nonfat dry milk in TBST. Detection: ECL



Basic Kit .Exposure time: 15s.

Immunofluorescence - RPL13 Polyclonal Antibody

Immunofluorescence analysis of MCF7 cells using RPL13 antibody . Blue: DAPI for nuclear staining.