

General Information

Gene Name Synonym

Activated leukocyte cell adhesion molecule; HB2; KG-CAM; Protein MEMD; SB-10 antigen

Protein Construction

A DNA sequence encoding the rat ALCAM (O35112) (Met1-Lys527) was expressed, fused with a polyhistidine tag at the C-terminus.

Organism

Rat

Expression Host

Human Cells

QC Testing

Activity

Immobilized rat ALCAM-His at 10 µg/ml (100 µl/well) can bind mouse CD6-Fc (Cat:500293), The EC₅₀ of mouse CD6-Fc (Cat:500293) is 0.08-0.18 µg/ml.

Purity

> 98 % as determined by SDS-PAGE

Endotoxin

< 1.0 EU per µg of the protein as determined by the LAL method

Stability

Samples are stable for up to twelve months from date of receipt at -70°C

Predicted N terminal

Trp 28

Molecular Mass

The recombinant rat ALCAM comprises 511 amino acids and predicts a molecular mass of 57.5 kDa. The apparent molecular mass of the recombinant protein is approximately 68-91 kDa in SDS-PAGE under reducing conditions due to glycosylation.

Formulation

Lyophilized from sterile PBS, pH 7.4

1. 5 % trehalose and mannitol are added as protectants before lyophilization.

2. Please contact us for any concerns or special requirements.

Usage Guide

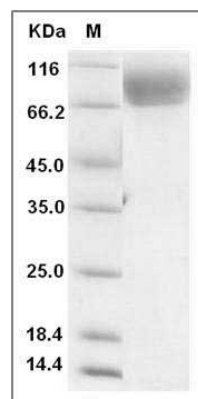
Storage

Store it under sterile conditions at -20°C to -80°C. It is recommended that the protein be aliquoted for optimal storage. Avoid repeated freeze-thaw cycles.

Reconstitution

Adding sterile water, prepare a stock solution of 0.25 mg/ml. Concentration is measured by UV-Vis.

SDS-PAGE



Rat ALCAM / CD166 Protein (His Tag) SDS-PAGE