

# Anti-PUMA Rabbit antibody

Catalog Number: 167222

## Product name

Anti-PUMA Rabbit antibody

## Specificity

Human

## Antibody description

PUMA Rabbit polyclonal antibody

## Preparation

Antigen: A synthetic peptide of human PUMA

## Formulation

Supplied in 50nM Tris-Glycine(pH 7.4), 0.15M NaCl, 40%Glycerol, 0.01% sodium azide and 0.05% BSA.

## Storage

Store at -20°C. Stable for 12 months from date of receipt.

## Clonality

Polyclonal

## Ig Type

Rabbit IgG

## Applications

WB, IHC-P, ICC/IF, FC

## Dilutions

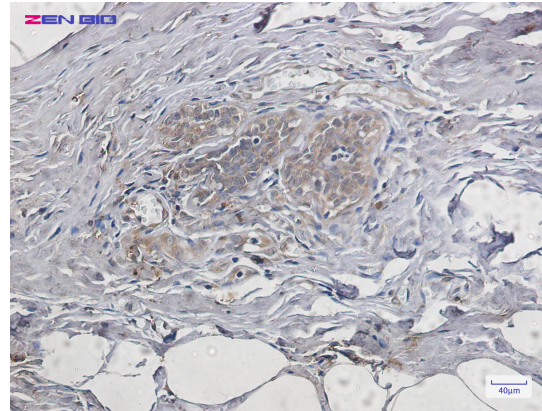
WB: 1/1000

IHC: 1/20-1/100

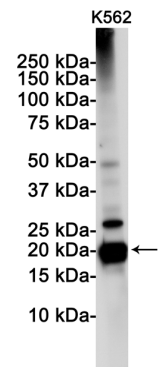
ICC/IF: 1/50-1/100

FC: 1/20

## Validations

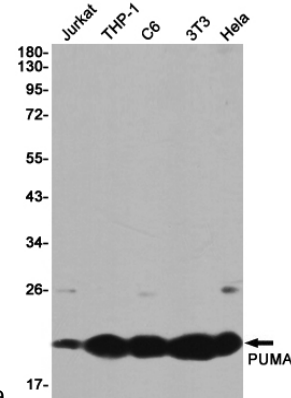


Immunohistochemistry of PUMA in paraffin-embedded Human breast cancer tissue using



PUMA Rabbit pAb at dilution 1/20

Western blot detection of PUMA in K562 cell lysates using PUMA Rabbit pAb(1:1000 diluted). Predicted band size:21KDa. Observed



band size:21KDa.

Western blot detection of PUMA in Jurkat, THP-1, C6, 3T3, HeLa cell lysates using PUMA Rabbit pAb(1:1000 diluted). Predicted band size:21KDa. Observed band size:21KDa.