

Anti-BSX antibody



Catalog Number: 175222

Product name

FC:1µg/Test

Anti-BSX antibody

Validations

Specificity

Human, Mouse, Rat, Dog, Pig, Cow, Horse, Rabbit, Sheep

Antibody description

Rabbit polyclonal antibody to BSX

Preparation

This antigen of this antibody was klh conjugated synthetic peptide derived from human bsx 101-200/233

Formulation

Liquid, 0.01M TBS(pH7.4) with 1% BSA, 0.03% Proclin300 and 50% Glycerol.

Storage

Store at -20°C for one year. Avoid repeated freeze/thaw cycles. The lyophilized antibody is stable at room temperature for at least one month and for greater than a year when kept at -20°C. When reconstituted in sterile pH 7.4 0.01M PBS or diluent of antibody the antibody is stable for at least two weeks at 2-4°C.

Clonality

Polyclonal

Ig Type

Rabbit IgG

Applications

WB, FC

Dilutions

WB:1:500-2000

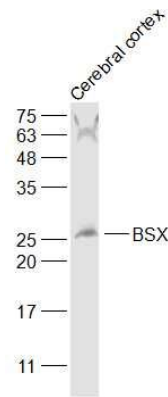
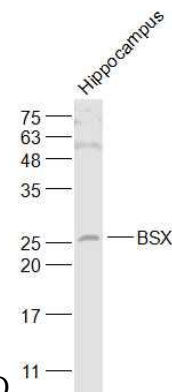


Fig1: Sample:; Cerebral cortex (Mouse) Lysate at 40 ug; Primary: Anti-BSX at 1/1000 dilution; Secondary: IRDye800CW Goat Anti-Rabbit IgG at 1/20000 dilution; Predicted band size: 26 kD;



Observed band size: 26 kD

Fig2: Sample:; Hippocampus (Mouse) Lysate at 40 ug; Primary: Anti-BSX at 1/1000 dilution; Secondary: IRDye800CW Goat Anti-Rabbit IgG at 1/20000 dilution; Predicted band size: 26 kD; Observed band size: 26 kD

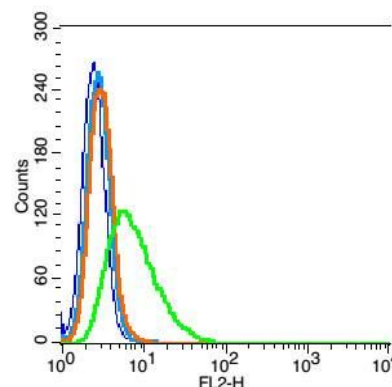


Fig3: Blank control: RSC96(blue).; Primary Antibody:Rabbit Anti-BSX antibody , Dilution: 1 μ g in 100 μ L 1X PBS containing 0.5% BSA;; Isotype Control Antibody(blue):Rabbit IgG(fixed with 2% paraformaldehyde (10 min) and then

permeabilized with ice-cold 90% methanol for 30 min on ice) ,used under the same conditions);; Secondary Antibody: Goat anti-rabbit IgG-PE(white blue), Dilution: 1:200 in 1 X PBS containing 0.5% BSA.