

# LIG4 antibody

Catalog Number: 112222

## Product name

LIG4 antibody

## Specificity

Human, Mouse; other species not tested.

## Antibody description

LIG4 Rabbit Polyclonal antibody. Positive IHC detected in human prostate cancer tissue, human testis tissue. Positive WB detected in mouse testis tissue, HeLa cells, HepG2 cells, mouse liver tissue, rat testis tissue. Observed molecular weight by Western-blot: 100-104 kDa

## Preparation

This antibody was obtained by immunization of LIG4 recombinant protein (Accession Number: NM\_002312). Purification method: Antigen affinity purified.

## Formulation

PBS with 0.1% sodium azide and 50% glycerol pH 7.3.

## Storage

Store at -20°C. DO NOT ALIQUOT

## Clonality

Polyclonal

## Ig Type

Rabbit IgG

## Applications

ELISA, WB, IHC

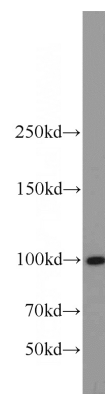
## Dilutions

Recommended Dilution:

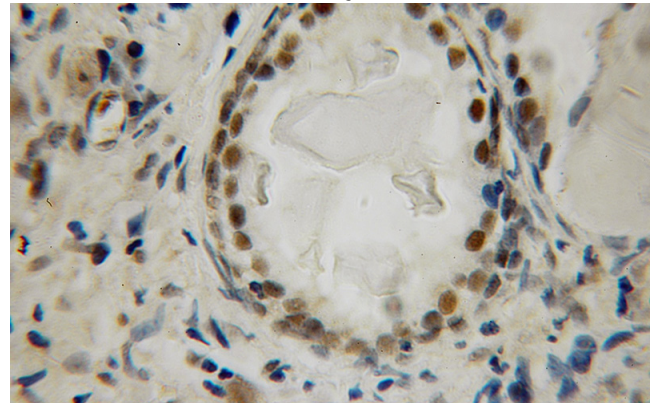
WB: 1:200-1:2000

IHC: 1:20-1:200

## Validations



mouse testis tissue were subjected to SDS PAGE followed by western blot with Catalog No:112222(LIG4 antibody) at dilution of 1:600



Immunohistochemical of paraffin-embedded human prostate cancer using Catalog No:112222(LIG4 antibody) at dilution of 1:100 (under 10x lens)