

Anti-Oct2 Rabbit antibody



Catalog Number: 168922

Product name

Anti-Oct2 Rabbit antibody

Specificity

Human

Antibody description

Oct2 Rabbit monoclonal antibody

Preparation

Antigen: A synthetic peptide of human Oct-2

Formulation

Supplied in 50nM Tris-Glycine(pH 7.4), 0.15M NaCl, 40%Glycerol, 0.01% sodium azide and 0.05% BSA.

Storage

Store at 4°C short term. Aliquot and store at -20°C long term. Avoid freeze / thaw cycle.

Clonality

Monoclonal

Ig Type

Rabbit IgG

Applications

WB, ICC/IF, FC

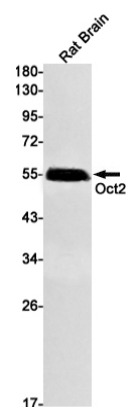
Dilutions

WB: 1/1000

ICC/IF: 1/50

FC: 1/20

Validations



Western blot detection of 44106 in Rat Brain lysates using Oct2 Rabbit mAb(1:1000 diluted).Predicted band size:51kDa.Observed band size:55kDa.