

# Anti-Calumenin Rabbit antibody



Catalog Number: 167922

## Product name

Anti-Calumenin Rabbit antibody

## Specificity

Human, Mouse, Rat

## Antibody description

Calumenin Rabbit monoclonal antibody

## Preparation

Antigen: A synthetic peptide of human Calumenin

## Formulation

50nM Tris-Glycine(pH 7.4), 0.15M NaCl,  
40%Glycerol, 0.01% sodium azide and 0.05% BSA

## Storage

Store at 4°C short term. Store at -20°C long term.  
Avoid freeze / thaw cycle.

## Clonality

Monoclonal

## Ig Type

Rabbit IgG

## Applications

WB, IHC-P, ICC/IF, FC

## Dilutions

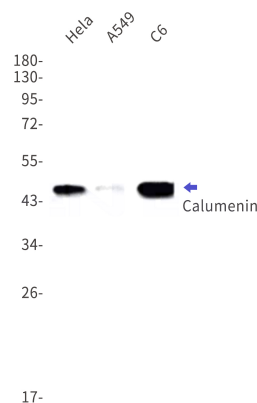
WB: 1/1000

IHC: 1/50

ICC/IF: 1/50

FC: 1/20

## Validations



Western blot detection of Calumenin in HeLa, A549, C6 cell lysates using Calumenin Rabbit mAb(1:1000 diluted). Predicted band size: 37kDa. Observed band size: 47kDa.