

MYEF2 antibody



Catalog Number: 112922

Product name

MYEF2 antibody

IP: 1:1000-1:10000

IHC: 1:20-1:200

Specificity

Human, Mouse, Rat; other species not tested.

IF: 1:10-1:100

Antibody description

MYEF2 Rabbit Polyclonal antibody. Positive IF detected in HepG2 cells. Positive IHC detected in human breast cancer tissue. Positive FC detected in HepG2 cells. Positive IP detected in Jurkat cells. Positive WB detected in Jurkat cells. Observed molecular weight by Western-blot: 64 kDa

Validations



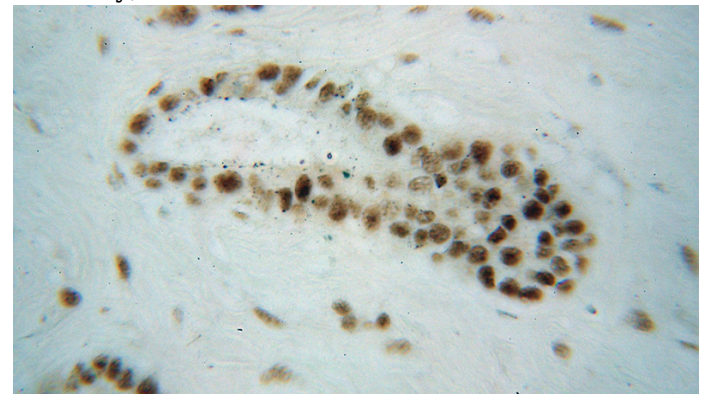
Preparation

This antibody was obtained by immunization of MYEF2 recombinant protein (Accession Number: BC014533). Purification method: Antigen affinity purified.

Jurkat cells were subjected to SDS PAGE followed by western blot with Catalog No:112922(MYEF2 antibody) at dilution of 1:2000

Formulation

PBS with 0.02% sodium azide and 50% glycerol pH 7.3.



Storage

Store at -20°C. DO NOT ALIQUOT

Clonality

Polyclonal

Ig Type

Rabbit IgG

Applications

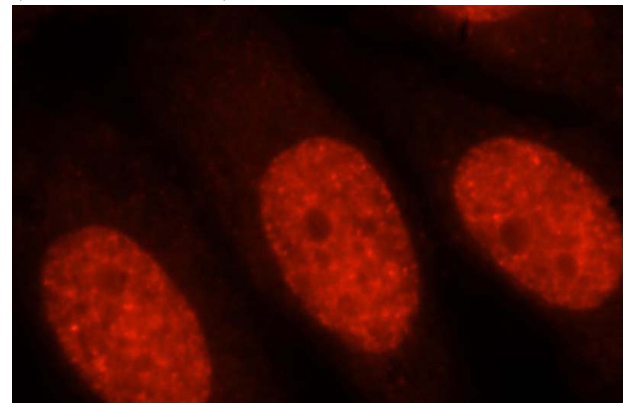
ELISA, WB, IHC, IF, FC, IP

Dilutions

Recommended Dilution:

WB: 1:1000-1:10000

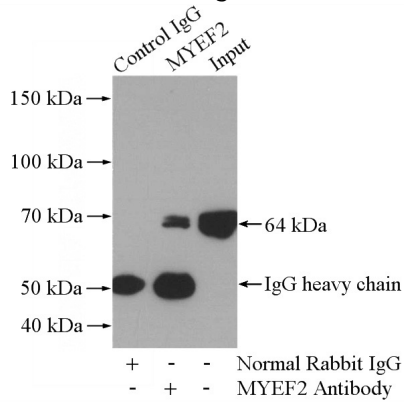
Immunohistochemical of paraffin-embedded human breast cancer using Catalog No:112922(MYEF2 antibody) at dilution of 1:100 (under 40x lens)



MYEF2 antibody

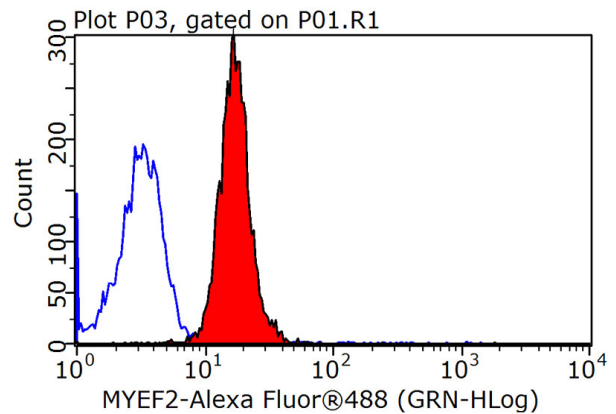
Catalog Number: 112922

Immunofluorescent analysis of HepG2 cells, using MYEF2 antibody Catalog No:112922 at 1:25 dilution and Rhodamine-labeled goat anti-rabbit



IgG (red).

IP Result of anti-MYEF2 (IP:Catalog No:112922, 4ug; Detection:Catalog No:112922 1:2000) with Jurkat cells lysate 2800ug.



1×10^6 HepG2 cells were stained with 0.2ug MYEF2 antibody (Catalog No:112922, red) and control antibody (blue). Fixed with 90% MeOH blocked with 3% BSA (30 min). Alexa Fluor 488-conjugated AffiniPure Goat Anti-Rabbit IgG(H+L) with dilution 1:1500.