

Anti-Phospho-ATF2 (Thr71) Rabbit antibody



Catalog Number: 166822

Product name

Anti-Phospho-ATF2 (Thr71) Rabbit antibody

Ig Type

Rabbit IgG

Specificity

Human, Mouse

Applications

WB, ICC/IF, IP

Antibody description

Phospho-ATF2 (Thr71) Rabbit polyclonal antibody

Dilutions

WB: 1/1000

ICC/IF: 1/100

IP: 1/20

Preparation

Antigen: A synthetic phosphopeptide corresponding to residues surrounding Thr71 of human ATF2

Validations

Formulation

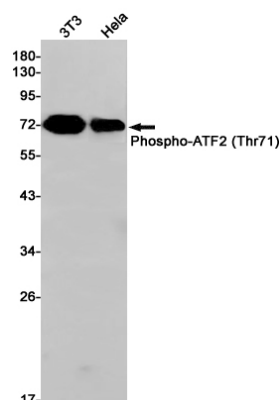
Supplied in 50nM Tris-Glycine(pH 7.4), 0.15M NaCl, 40%Glycerol, 0.01% sodium azide and 0.05% BSA.

Storage

Store at -20°C. Stable for 12 months from date of receipt.

Clonality

Polyclonal



Western blot detection of Phospho-ATF2 (Thr71) in 3T3, HeLa cell lysates using Phospho-ATF2 (Thr71) Rabbit pAb (1:1000 diluted). Predicted band size: 55kDa. Observed band size: 70kDa.