

## Product name

SUFU antibody

## Specificity

Human, Mouse, Rat; other species not tested.

## Antibody description

SUFU Rabbit Polyclonal antibody. Positive IF detected in hTERT-RPE1 cells. Positive IHC detected in human ovary tumor tissue. Observed molecular weight by Western-blot: 54 kDa

## Preparation

This antibody was obtained by immunization of SUFU recombinant protein (Accession Number: NM\_016169). Purification method: Antigen affinity purified.

## Formulation

PBS with 0.1% sodium azide and 50% glycerol pH 7.3.

## Storage

Store at -20°C. DO NOT ALIQUOT

## Clonality

Polyclonal

## Ig Type

Rabbit IgG

## Applications

ELISA, IHC, IF

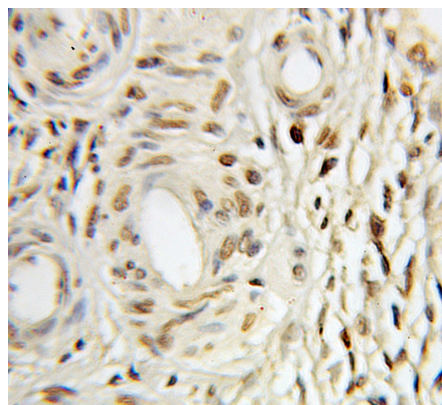
## Dilutions

Recommended Dilution:

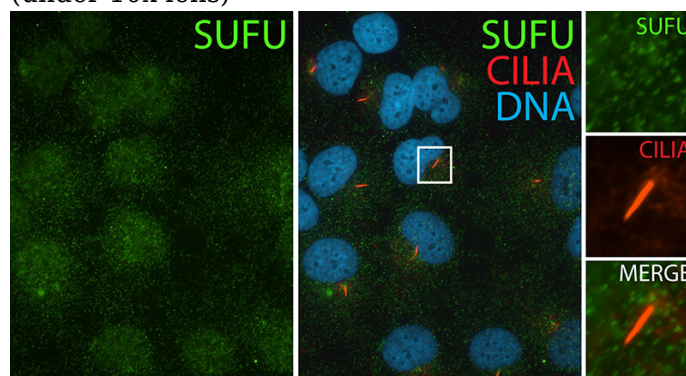
IHC: 1:20-1:200

IF: N/A

## Validations



Immunohistochemical of paraffin-embedded human ovary tumor using Catalog No: 115822 (SUFU antibody) at dilution of 1:100 (under 10x lens)



IF result (nuclear and cytoplasm stain) of anti-SUFU (Catalog No: 115822, 1:50) with serum-starved hTERT-RPE1 cells by Dr. Moshe Kim.