

# RPP25 antibody



Catalog Number: 114822

## Product name

RPP25 antibody

Recommended Dilution:

WB: 1:200-1:1000

## Immunogen

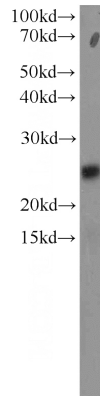
IHC: 1:20-1:200

[Human RPP25 Recombinant protein \(His tag\)](#)

## Validations

## Specificity

Human, Mouse, Rat; other species not tested.



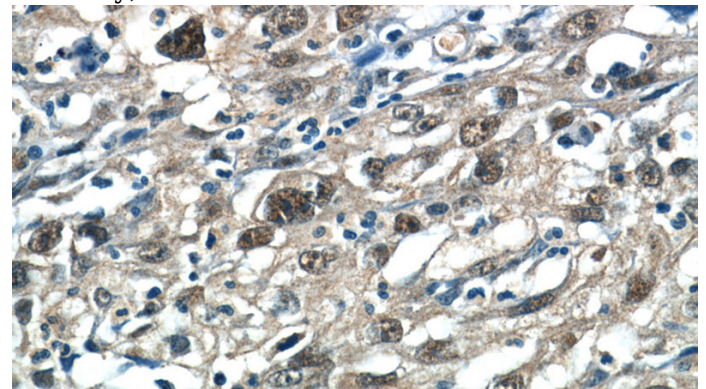
## Antibody description

RPP25 Rabbit Polyclonal antibody. Positive IHC detected in human small intestine tissue, human cervical cancer tissue. Positive WB detected in HeLa cells, MCF7 cells. Observed molecular weight by Western-blot: 25 kDa

HeLa cells were subjected to SDS PAGE followed by western blot with Catalog No:114822(RPP25 antibody) at dilution of 1:300

## Preparation

This antibody was obtained by immunization of RPP25 recombinant protein (Accession Number: NM\_017793). Purification method: Antigen affinity purified.



## Formulation

PBS with 0.1% sodium azide and 50% glycerol pH 7.3.

Immunohistochemistry of paraffin-embedded human cervical cancer tissue slide using Catalog No:114822(RPP25 Antibody) at dilution of 1:50 (under 40x lens)

## Storage

Store at -20°C. DO NOT ALIQUOT

## Clonality

Polyclonal

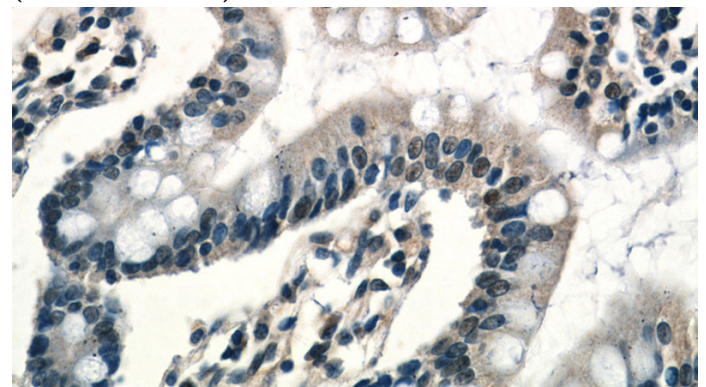
## Ig Type

Rabbit IgG

## Applications

ELISA, WB, IHC

## Dilutions



# RPP25 antibody



Catalog Number: 114822

---

Immunohistochemistry of paraffin-embedded  
human small intestine tissue slide using Catalog

No:114822(RPP25 Antibody) at dilution of 1:50  
(under 40x lens)