

PHKG2 antibody



Catalog Number: 113822

Product name

PHKG2 antibody

IHC: 1:20-1:200

IF: 1:10-1:100

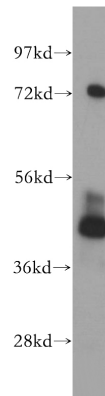
Specificity

Human, Mouse, Rat; other species not tested.

Validations

Antibody description

PHKG2 Rabbit Polyclonal antibody. Positive IHC detected in human liver cancer tissue. Positive IF detected in Hela cells. Positive WB detected in mouse testis tissue, HEK-293 cells. Observed molecular weight by Western-blot: 46kd



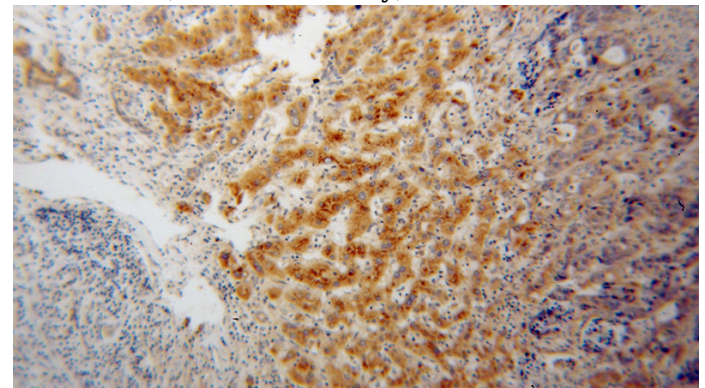
Preparation

This antibody was obtained by immunization of PHKG2 recombinant protein (Accession Number: NM_000294). Purification method: Antigen affinity purified.

mouse testis tissue were subjected to SDS PAGE followed by western blot with Catalog No:113822(PHKG2 antibody) at dilution of 1:300

Formulation

PBS with 0.02% sodium azide and 50% glycerol pH 7.3.



Storage

Store at -20°C. DO NOT ALIQUOT

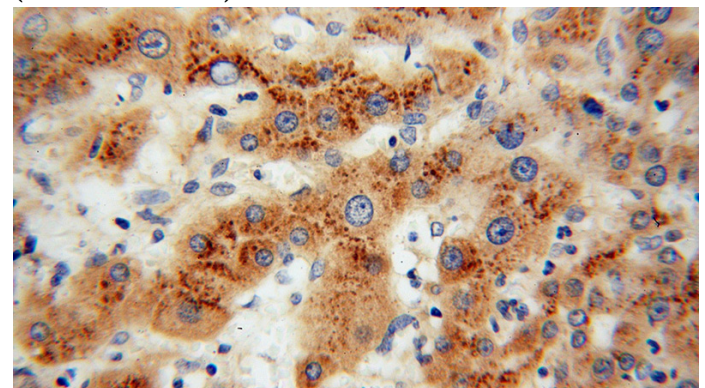
Clonality

Polyclonal

Immunohistochemical of paraffin-embedded human liver cancer using Catalog No:113822(PHKG2 antibody) at dilution of 1:100 (under 10x lens)

Ig Type

Rabbit IgG



Applications

ELISA, WB, IHC, IF

Dilutions

Recommended Dilution:

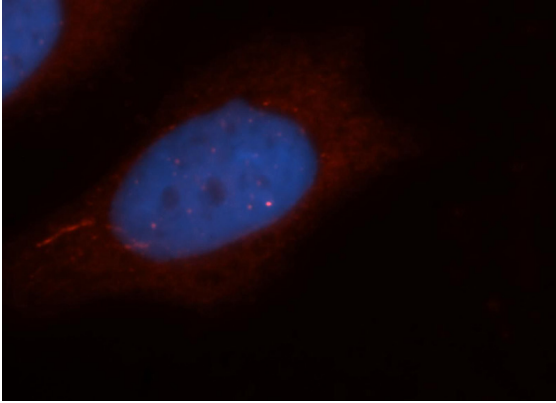
WB: 1:500-1:5000

Immunohistochemical of paraffin-embedded

PHKG2 antibody

Catalog Number: 113822

human liver cancer using Catalog
No:113822(PHKG2 antibody) at dilution of 1:100
(under 40x lens)



Immunofluorescent analysis of Hela cells, using
PHKG2 antibody Catalog No:113822 at 1:25
dilution and Rhodamine-labeled goat anti-rabbit
IgG (red). Blue pseudocolor = DAPI (fluorescent
DNA dye).