

# MRPL3 antibody

Catalog Number: 112822

## Product name

MRPL3 antibody

## Specificity

Human, Mouse, Rat; other species not tested.

## Antibody description

MRPL3 Rabbit Polyclonal antibody. Positive WB detected in HeLa cells, A431 cells, HepG2 cells. Positive IHC detected in human cervical cancer tissue, human liver cancer tissue. Observed molecular weight by Western-blot: 39kd

## Preparation

This antibody was obtained by immunization of MRPL3 recombinant protein (Accession Number: NM\_007208). Purification method: Antigen affinity purified.

## Formulation

PBS with 0.02% sodium azide and 50% glycerol pH 7.3.

## Storage

Store at -20°C. DO NOT ALIQUOT

## Clonality

Polyclonal

## Ig Type

Rabbit IgG

## Applications

ELISA, WB, IHC

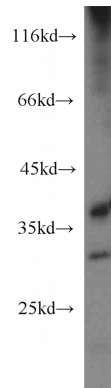
## Dilutions

Recommended Dilution:

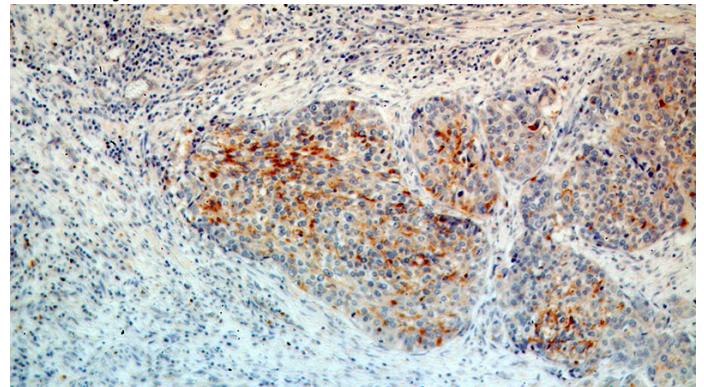
WB: 1:1000-1:10000

IHC: 1:20-1:200

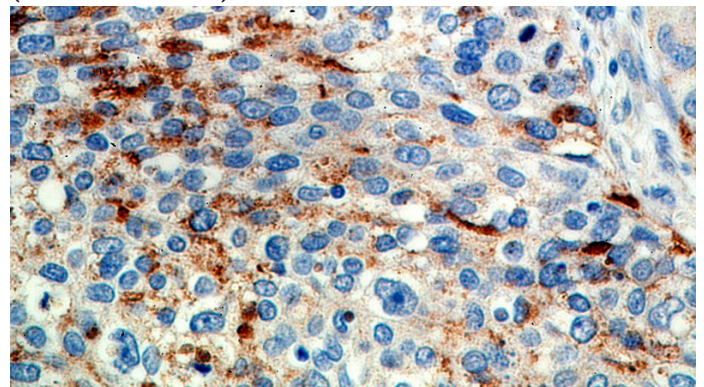
## Validations



HeLa cells were subjected to SDS PAGE followed by western blot with Catalog No:112822(MRPL3 antibody) at dilution of 1:1000



Immunohistochemical of paraffin-embedded human cervical cancer using Catalog No:112822(MRPL3 antibody) at dilution of 1:100 (under 10x lens)



Immunohistochemical of paraffin-embedded human cervical cancer using Catalog No:112822(MRPL3 antibody) at dilution of 1:100

# MRPL3 antibody



Catalog Number: 112822

---

(under 40x lens)