

# Melanophilin antibody



Catalog Number: 107422

## Product name

Melanophilin antibody

IHC: 1:20-1:200

IF: 1:10-1:100

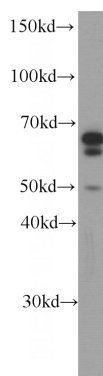
## Specificity

Human; other species not tested.

## Validations

## Antibody description

Melanophilin Mouse Monoclonal antibody. Positive IF detected in HepG2 cells. Positive IHC detected in human skin cancer tissue, human kidney tissue. Positive WB detected in PC-3 cells, HEK-293 cells. Observed molecular weight by Western-blot: 66kD,63kD



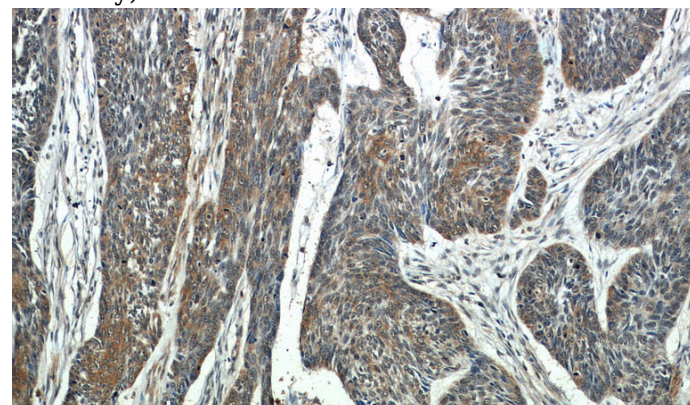
## Preparation

This antibody was obtained by immunization of Melanophilin recombinant protein (Accession Number: NM\_024101). Purification method: Protein G purified.

PC-3 cells were subjected to SDS PAGE followed by western blot with Catalog No:107422(MLPH antibody) at dilution of 1:1000

## Formulation

PBS with 0.02% sodium azide and 50% glycerol pH 7.3.



## Storage

Store at -20°C. DO NOT ALIQUOT

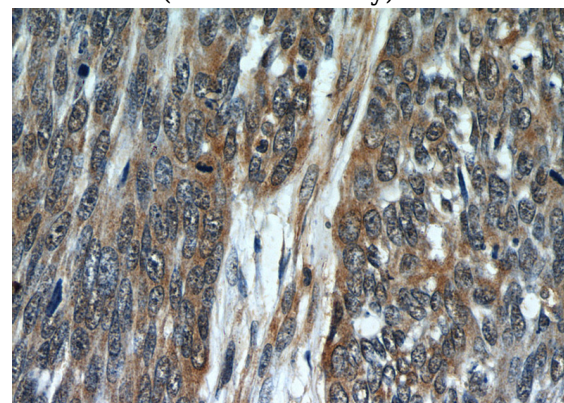
## Clonality

Monoclonal

Immunohistochemistry of paraffin-embedded human skin cancer slide using Catalog No:107422(MLPH Antibody) at dilution of 1:50

## Ig Type

Mouse IgG1



## Applications

ELISA, WB, IF, IHC

## Dilutions

Recommended Dilution:

WB: 1:500-1:5000

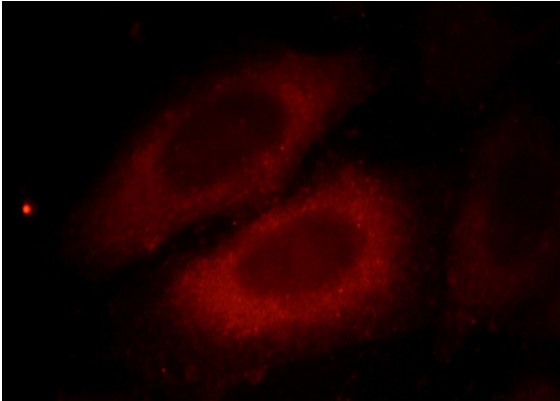
Immunohistochemistry of paraffin-embedded human skin cancer slide using Catalog

# Melanophilin antibody

Catalog Number: 107422

---

No:107422(MLPH Antibody) at dilution of 1:50



Immunofluorescent analysis of HepG2 cells, using MLPH antibody Catalog No: at 1:25 dilution and Rhodamine-labeled goat anti-mouse IgG (red).