

Rab23 antibody

Catalog Number: 114422

Product name

Rab23 antibody

Immunogen

[Human RAB23 Recombinant protein \(GST tag\)](#)

Specificity

Human, Mouse, Rat; other species not tested.

Antibody description

Rab23 Rabbit Polyclonal antibody. Positive IHC detected in human liver cancer tissue. Positive IP detected in mouse brain tissue. Positive WB detected in mouse brain tissue, human brain tissue, rat brain tissue. Observed molecular weight by Western-blot: 27 kDa

Preparation

This antibody was obtained by immunization of Rab23 recombinant protein (Accession Number: NM_001278666). Purification method: Antigen affinity purified.

Formulation

PBS with 0.1% sodium azide and 50% glycerol pH 7.3.

Storage

Store at -20°C. DO NOT ALIQUOT

Clonality

Polyclonal

Ig Type

Rabbit IgG

Applications

ELISA, WB, IP, IHC

Dilutions

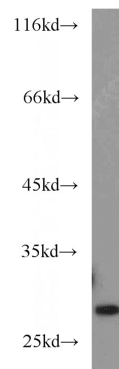
Recommended Dilution:

WB: 1:500-1:5000

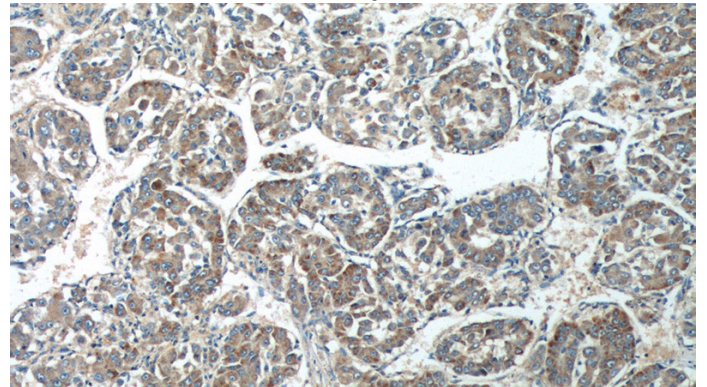
IP: 1:500-1:5000

IHC: 1:50-1:500

Validations



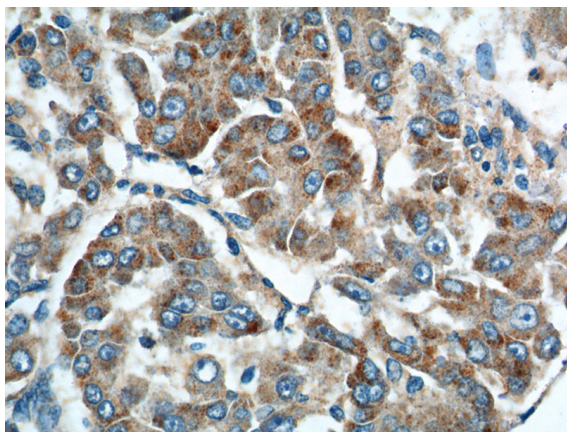
mouse brain tissue were subjected to SDS PAGE followed by western blot with Catalog No:114422(RAB23 antibody) at dilution of 1:1000



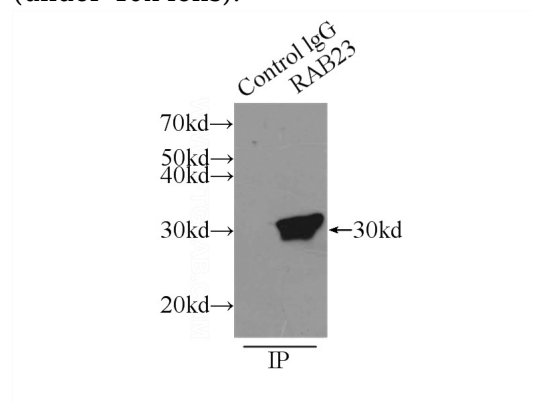
Immunohistochemistry of paraffin-embedded human liver cancer tissue slide using Catalog No:114422(RAB23 Antibody) at dilution of 1:200 (under 10x lens).

Rab23 antibody

Catalog Number: 114422



(under 40x lens).



Immunohistochemistry of paraffin-embedded human liver cancer tissue slide using Catalog No:114422(RAB23 Antibody) at dilution of 1:200

IP Result of anti-RAB23 (IP:Catalog No:114422, 3ug; Detection:Catalog No:114422 1:1000) with mouse brain tissue lysate 7000ug.