

MAP4 antibody

Catalog Number: 112422

Product name

MAP4 antibody

IP: 1:500-1:5000

IHC: 1:20-1:200

Specificity

Human, Mouse, Rat; other species not tested.

Antibody description

MAP4 Rabbit Polyclonal antibody. Positive IP detected in HEK-293 cells. Positive WB detected in HEK-293 cells, HeLa cells. Positive IHC detected in human lung cancer tissue. Observed molecular weight by Western-blot: 210 kDa

Preparation

This antibody was obtained by immunization of MAP4 recombinant protein (Accession Number: BC012794). Purification method: Antigen affinity purified.

Formulation

PBS with 0.1% sodium azide and 50% glycerol pH 7.3.

Storage

Store at -20°C. DO NOT ALIQUOT

Clonality

Polyclonal

Ig Type

Rabbit IgG

Applications

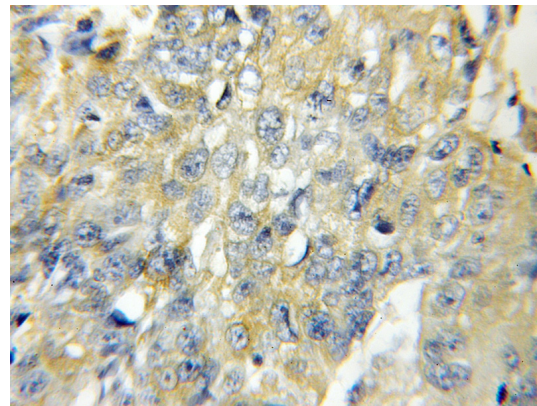
ELISA, IHC, WB, IP

Dilutions

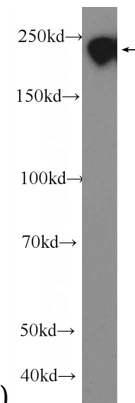
Recommended Dilution:

WB: 1:200-1:2000

Validations

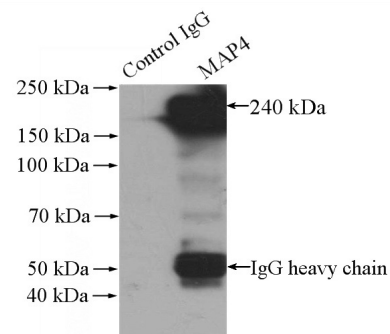


Immunohistochemical of paraffin-embedded human lung cancer using Catalog No:112422(MAP4 antibody) at dilution of 1:50



(under 10x lens)

HEK-293 cells were subjected to SDS PAGE followed by western blot with Catalog No:112422(MAP4 Antibody) at dilution of 1:600



+ - Normal Rabbit IgG
- + MAP4 antibody

IP Result of anti-MAP4 (IP:Catalog No:112422,

MAP4 antibody



Catalog Number: 112422

4ug; Detection:Catalog No:112422 1:1000) with HEK-293 cells lysate 1200ug.