

Anti-ETHE1 antibody



Catalog Number: 142422

Product name

Anti-ETHE1 antibody

Immunogen

[Human ETHE1 / HSCO \(His Tag\) recombinant protein](#)

Specificity

Human ETHE1 / HSCO

Antibody description

Rabbit Monoclonal to Human ETHE1

Preparation

This antibody was obtained from a rabbit immunized with purified, recombinant Human ETHE1 / HSCO .

Formulation

0.2 µm filtered solution in PBS

Storage

This antibody can be stored at 2°C-8°C for one month without detectable loss of activity. Antibody products are stable for twelve months from date of receipt when stored at -20°C to -80°C.

Preservative-Free.

Sodium azide is recommended to avoid contamination (final concentration 0.05%-0.1%). It is toxic to cells and should be disposed of properly. Avoid repeated freeze-thaw cycles.

Clonality

Monoclonal

Ig Type

Rabbit IgG

Applications

WB, ELISA, IP

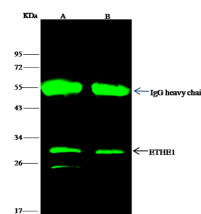
Dilutions

ELISA: 0.1-0.2 µg/ml

This antibody can be used at 0.1-0.2 µg/ml with the appropriate secondary reagents to detect Human ETHE1 / HSCO.

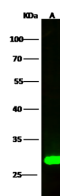
IP: 1-4 µl/mg of lysate

Validations



Lanes	A	B
Items	HeLa	Jurkat
Sample (whole cell lysate)		
Sample quantity	0.5 mg	
IP antibody quantity	2 µg	
Protein G agarose	15 µl of 50% Protein G Agarose	
Gel	13% SDS-PAGE reducing gel	
Primary antibody	His-ETHE1 antibody at 10 µg/ml	
Secondary antibody	Dylight 800-labeled antibody to rabbit IgG (1:1), at 1:5000 dilution	

Human ETHE1 / HSCO Immunoprecipitation(IP)



Lanes	A
Items	HepG2
Sample (whole cell lysate)	
Sample Volume (µg/lane)	30
Gel	13% SDS-PAGE reducing gel
Recommended Concentration	1-5 µg/ml
Secondary Antibody	Dylight 800-labeled Antibody to Rabbit IgG (1:1), at 1:5000 dilution.
Developed using Odyssey imaging system.	
Explanation	Predicted band size : 28 kDa Observed band size : 28 kDa

14822

ETHE1 / HSCO Antibody, Rabbit MAb, Western blot