

Anti-CCNA2/Cyclin A2 antibody



Catalog Number: 101422

Product name

Anti-CCNA2/Cyclin A2 antibody

Specificity

Mouse CCNA2

Antibody description

Rabbit polyclonal to CCNA2/Cyclin A2

Preparation

Produced in rabbits immunized with a synthetic peptide corresponding to the C-terminus of the mouse CCNA2, and purified by antigen affinity chromatography.

Formulation

0.2 μ m filtered solution in PBS

Storage

This antibody can be stored at 2°C-8°C for one month without detectable loss of activity. Antibody products are stable for twelve months from date of receipt when stored at -20°C to -80°C.

Preservative-Free.

Sodium azide is recommended to avoid contamination (final concentration 0.05%-0.1%). It is toxic to cells and should be disposed of properly. Avoid repeated freeze-thaw cycles.

Clonality

Polyclonal

Ig Type

Rabbit IgG

Applications

WB, IF, IP, ICC/IF

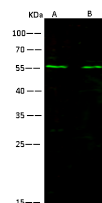
Dilutions

WB: 10-20 μ g/ml

ICC/IF: 0.5-1.5 μ g/mL

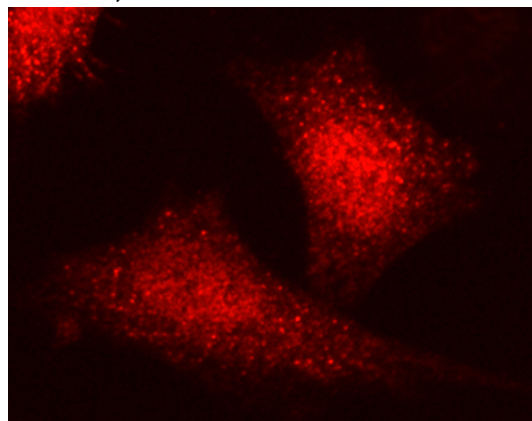
IP: 4-6 μ g/mg of lysate

Validations



Items	Lanes	A	B
Sample (whole cell lysate)		HeLa	Raji
Sample Volume (μ g/lane)		30	30
Gel	13% SDS-PAGE reducing gel		
Recommended Concentration	10-20 μ g/ml		
Secondary Antibody	Dylight 800-labeled Antibody To Rabbit IgG (H+L), at 1:5000 dilution. Developed using Odyssey imaging system.		
Explanation	Predicted band size : 60 kDa Observed band size : 55 kDa		

CCNA2 Antibody, Rabbit PAb, Antigen Affinity Purified, Western blot



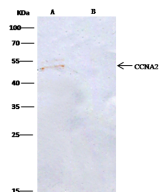
CCNA2 Antibody, Rabbit PAb, Antigen Affinity Purified, Immunofluorescence

Immunofluorescence staining of CCNA2 in HeLa cells. Cells were fixed with 4% PFA, permeabilized with 0.3% Triton X-100 in PBS, blocked with 10% serum, and incubated with rabbit anti-human CCNA2 polyclonal antibody (1 μ g/ml) at 4°C overnight. Then cells were stained with the Alexa Fluor®594-conjugated Goat Anti-rabbit IgG secondary antibody (red). Positive staining was localized to cytoplasm and nucleus.

Anti-CCNA2/Cyclin A2 antibody



Catalog Number: 101422



CCNA2 Antibody, Rabbit PAb, Antigen Affinity Purified, Immunoprecipitation

Item	Lanes	A	B
Sample (whole-cell lysate)	Hela		
Sample quantity	0.5 mg		
IP antibody type	KLH-SMCC-SINO1197-RP02	Rabbit blank IgG	
IP antibody quantity	2 µg		
Protein G agarose	15 µl of 50% Protein G Agarose		
Gel	1% SDS-PAGE reducing gel		
Primary antibody	KLH-SMCC-SINO1197-RP02 antibody at 10 µg/ml		
Secondary antibody	Chrom-3800 IP Detection Reagent (HRP) at 1:1000 dilution		