

Anti-Cyclin H Rabbit antibody



Catalog Number: 169022

Product name

Anti-Cyclin H Rabbit antibody

Specificity

Human, Mouse, Rat

Antibody description

Cyclin H Rabbit monoclonal antibody

Preparation

Antigen: A synthetic peptide of human Cyclin H

Formulation

50nM Tris-Glycine(pH 7.4), 0.15M NaCl, 40%Glycerol, 0.01% sodium azide and 0.05% BSA.

Storage

Store at 4°C short term. Store at -20°C long term. Avoid freeze / thaw cycle.

Clonality

Monoclonal

Ig Type

Rabbit IgG

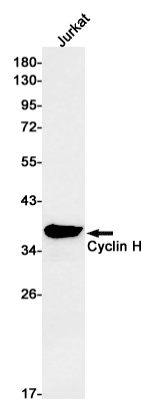
Applications

WB

Dilutions

WB: 1/1000-1/5000

Validations



Western blot detection of Cyclin H in Jurkat cell lysates using Cyclin H Rabbit mAb(1:1000 diluted).Predicted band size:38kDa.Observed band size:36kDa.