

SCUBE3 antibody



Catalog Number: 115022

Product name

SCUBE3 antibody

Specificity

Human, Mouse, Rat; other species not tested.

Antibody description

SCUBE3 Rabbit Polyclonal antibody. Positive WB detected in mouse kidney tissue, mouse lung tissue. Positive IHC detected in human kidney tissue. Observed molecular weight by Western-blot: 130kd

Preparation

This antibody was obtained by immunization of SCUBE3 recombinant protein (Accession Number: NM_001303136). Purification method: Antigen affinity purified.

Formulation

PBS with 0.02% sodium azide and 50% glycerol pH 7.3.

Storage

Store at -20°C. DO NOT ALIQUOT

Clonality

Polyclonal

Ig Type

Rabbit IgG

Applications

ELISA, WB, IHC

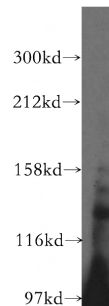
Dilutions

Recommended Dilution:

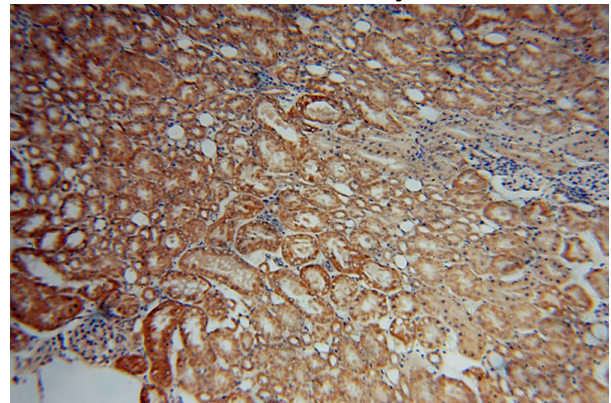
WB: 1:200-1:1000

IHC: 1:20-1:200

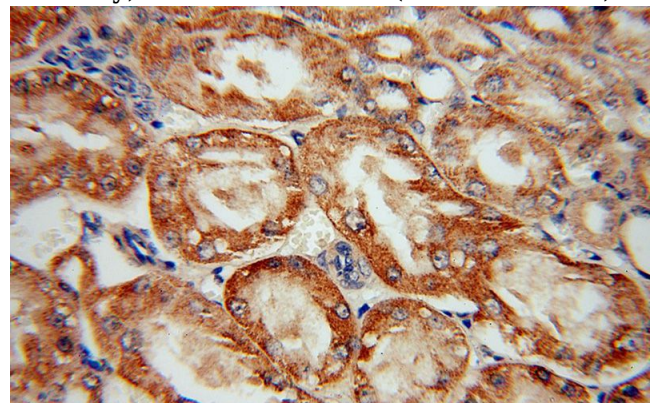
Validations



mouse kidney tissue were subjected to SDS PAGE followed by western blot with Catalog No:115022(SCUBE3 antibody) at dilution of 1:300



Immunohistochemical of paraffin-embedded human kidney using Catalog No:115022(SCUBE3 antibody) at dilution of 1:50 (under 10x lens)



Immunohistochemical of paraffin-embedded human kidney using Catalog No:115022(SCUBE3 antibody) at dilution of 1:50 (under 40x lens)