

PMF1 antibody



Catalog Number: 114022

Product name

PMF1 antibody

IHC: 1:20-1:200

IF: 1:10-1:100

Specificity

Human, Mouse; other species not tested.

Antibody description

PMF1 Rabbit Polyclonal antibody. Positive IHC detected in human gliomas tissue. Positive IF detected in HepG2 cells. Positive WB detected in Jurkat cells, HepG2 cells. Observed molecular weight by Western-blot: 23kd

Preparation

This antibody was obtained by immunization of PMF1 recombinant protein (Accession Number: BC033656). Purification method: Antigen affinity purified.

Formulation

PBS with 0.1% sodium azide and 50% glycerol pH 7.3.

Storage

Store at -20°C. DO NOT ALIQUOT

Clonality

Polyclonal

Ig Type

Rabbit IgG

Applications

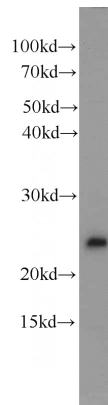
ELISA, WB, IHC, IF

Dilutions

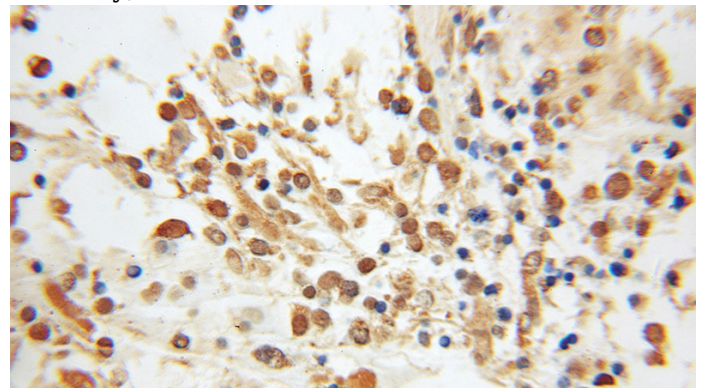
Recommended Dilution:

WB: 1:200-1:2000

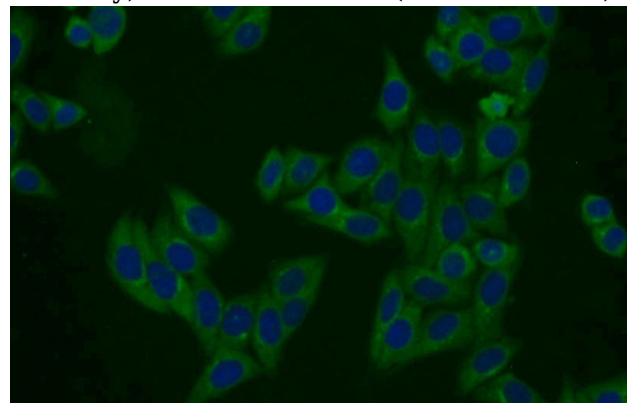
Validations



Jurkat cells were subjected to SDS PAGE followed by western blot with Catalog No:114022(PMF1 antibody) at dilution of 1:400



Immunohistochemical of paraffin-embedded human gliomas using Catalog No:114022(PMF1 antibody) at dilution of 1:50 (under 10x lens)



Immunofluorescent analysis of HepG2 cells using Catalog No:114022(PMF1 Antibody) at dilution of

PMF1 antibody



Catalog Number: 114022

1:25 and Alexa Fluor 488-conjugated AffiniPure

Goat Anti-Rabbit IgG(H+L)