

# NANS antibody

Catalog Number: 113022

## Product name

NANS antibody

IHC: 1:50-1:500

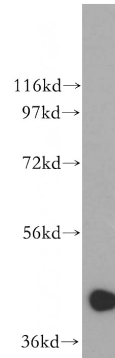
## Specificity

Human, Mouse, Rat; other species not tested.

## Antibody description

NANS Rabbit Polyclonal antibody. Positive WB detected in HeLa cells, HepG2 cells, human brain tissue. Positive IHC detected in human ovary tumor tissue, human stomach cancer tissue. Observed molecular weight by Western-blot: 40 kDa

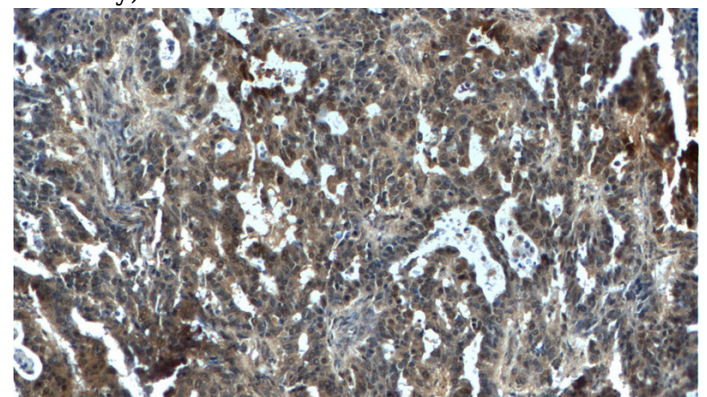
## Validations



HeLa cells were subjected to SDS PAGE followed by western blot with Catalog No:113022(NANS antibody) at dilution of 1:500

## Preparation

This antibody was obtained by immunization of NANS recombinant protein (Accession Number: NM\_018946). Purification method: Antigen affinity purified.



## Formulation

PBS with 0.02% sodium azide and 50% glycerol pH 7.3.

## Storage

Store at -20°C. DO NOT ALIQUOT

## Clonality

Polyclonal

## Ig Type

Rabbit IgG

## Applications

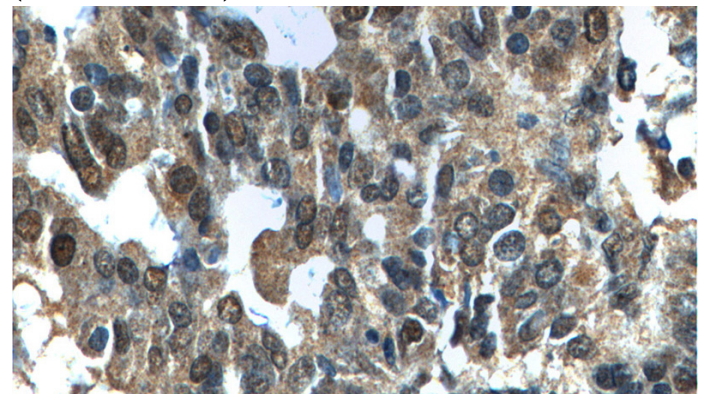
ELISA, WB, IHC

## Dilutions

Recommended Dilution:

WB: 1:500-1:5000

Immunohistochemistry of paraffin-embedded human ovary tumor tissue slide using Catalog No:113022(NANS Antibody) at dilution of 1:100 (under 10x lens).



Immunohistochemistry of paraffin-embedded human ovary tumor tissue slide using Catalog No:113022(NANS Antibody) at dilution of 1:100

# NANS antibody



Catalog Number: 113022

---

(under 40x lens).