

## General Information

### Gene Name Synonym

Phosphatidylethanolamine binding protein 1, isoform CRA\_a; Phosphatidylethanolamine-binding protein 1

### Protein Construction

A DNA sequence encoding the human PEBP1 (NP\_002558.1) (Met1-Lys187) was expressed.

### Organism

Human

### Expression Host

E. coli

## QC Testing

### Purity

> 95 % as determined by SDS-PAGE.

### Endotoxin

Please contact us for more information.

### Stability

Samples are stable for up to twelve months from date of receipt at -70°C

### Predicted N terminal

Met

### Molecular Mass

The recombinant human PEBP1 consists 187

amino acids and predicts a molecular mass of 21.1 kDa.

### Formulation

Lyophilized from sterile 20 mM TRIS, 10 % glycerol, pH 8.0.

1. 5 % trehalose and mannitol are added as protectants before lyophilization.

2. Please contact us for any concerns or special requirements.

## Usage Guide

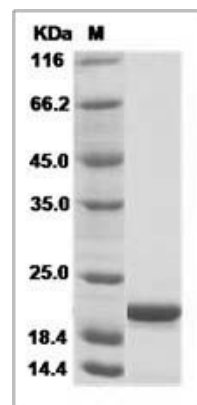
### Storage

Store it under sterile conditions at -20°C to -80°C. It is recommended that the protein be aliquoted for optimal storage. Avoid repeated freeze-thaw cycles.

### Reconstitution

Adding sterile water, prepare a stock solution of 0.25 mg/ml. Concentration is measured by UV-Vis.

### SDS-PAGE



Human PEBP1 / Phosphatidylethanolamine binding protein 1 Protein SDS-PAGE