

KDELC2 antibody



Catalog Number: 112022

Product name

KDELC2 antibody

IHC: 1:20-1:200

IF: 1:20-1:200

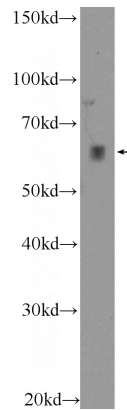
Specificity

Human; other species not tested.

Validations

Antibody description

KDELC2 Rabbit Polyclonal antibody. Positive WB detected in HeLa cells, human placenta tissue, SMMC-7721 cells. Positive IF detected in HepG2 cells. Positive IHC detected in human testis tissue, human cervical cancer tissue. Observed molecular weight by Western-blot: 62 kDa



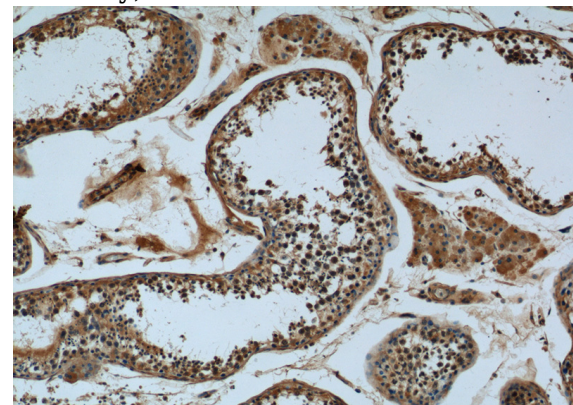
Preparation

This antibody was obtained by immunization of KDELC2 recombinant protein (Accession Number: NM_153705). Purification method: Antigen affinity purified.

HeLa cells were subjected to SDS PAGE followed by western blot with Catalog No:112022(KDELC2 Antibody) at dilution of 1:600

Formulation

PBS with 0.02% sodium azide and 50% glycerol pH 7.3.



Storage

Store at -20°C. DO NOT ALIQUOT

Clonality

Polyclonal

Immunohistochemistry of paraffin-embedded human testis tissue slide using Catalog No:112022(KDELC2 Antibody) at dilution of 1:50 (under 10x lens)

Ig Type

Rabbit IgG

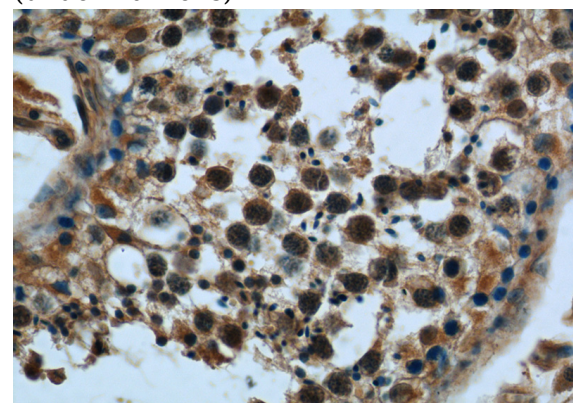
Applications

ELISA, WB, IHC, IF

Dilutions

Recommended Dilution:

WB: 1:200-1:2000

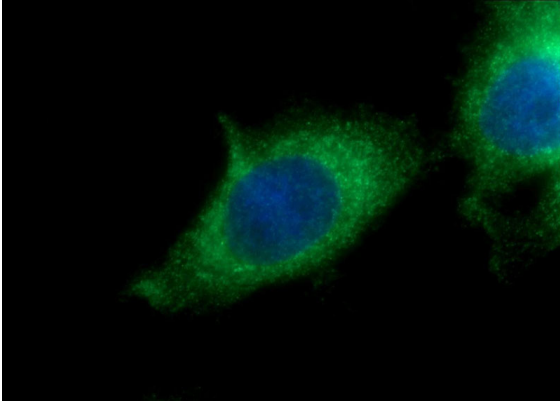


Immunohistochemistry of paraffin-embedded

KDEL2 antibody

Catalog Number: 112022

human testis tissue slide using Catalog No:112022(KDEL2 Antibody) at dilution of 1:50 (under 40x lens)



Immunofluorescent analysis of HepG2 cells using Catalog No:112022(KDEL2 Antibody) at dilution of 1:50 and Alexa Fluor 488-conjugated AffiniPure Goat Anti-Rabbit IgG(H+L)