

# GLI3-Specific antibody



Catalog Number: 111022

## Product name

GLI3-Specific antibody

WB: 1:200-1:1000

IP: 1:200-1:1000

## Specificity

Human, Mouse, Rat; other species not tested.

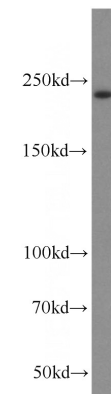
IHC: 1:20-1:200

IF: 1:10-1:100

## Antibody description

GLI3-Specific Rabbit Polyclonal antibody. Positive WB detected in human placenta tissue, mouse lung tissue. Positive IP detected in mouse lung tissue. Positive FC detected in HepG2 cells. Positive IHC detected in human testis tissue, human colon tissue. Positive IF detected in HepG2 cells. Observed molecular weight by Western-blot: 230kd, 83-86kd

## Validations



## Preparation

This antibody was obtained by immunization of Peptide (Accession Number: NM\_000168). Purification method: Antigen affinity purified.

human placenta tissue were subjected to SDS PAGE followed by western blot with Catalog No:111022(GLI3-Specific antibody) at dilution of

## Formulation

PBS with 0.1% sodium azide and 50% glycerol pH 7.3.

## Storage

Store at -20°C. DO NOT ALIQUOT

## Clonality

Polyclonal

## Ig Type

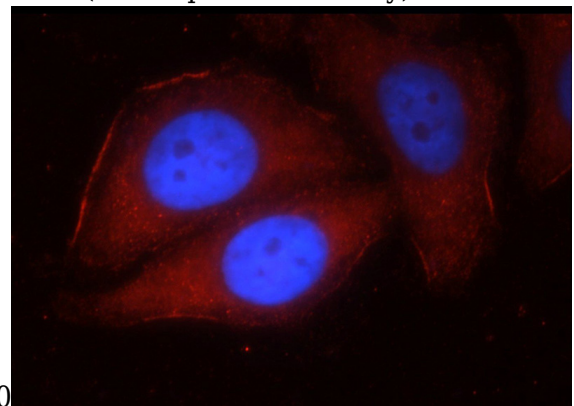
Rabbit IgG

## Applications

ELISA, WB, IF, IHC, FC, IP

## Dilutions

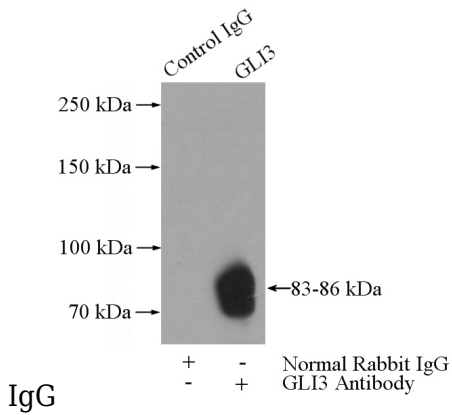
Recommended Dilution:



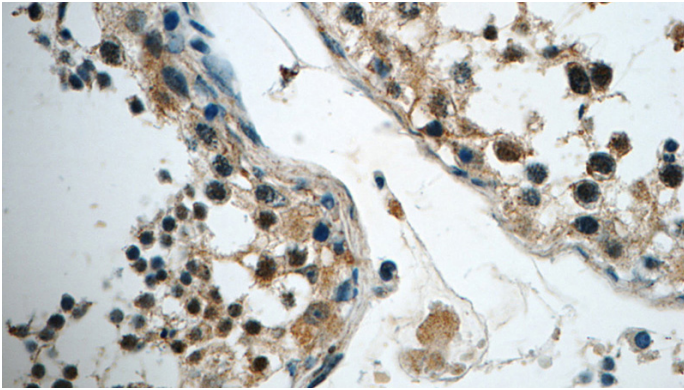
Immunofluorescent analysis of HepG2 cells using Catalog No:111022(GLI3-Specific Antibody) at dilution of 1:25 and Rhodamine-Goat anti-Rabbit

# GLI3-Specific antibody

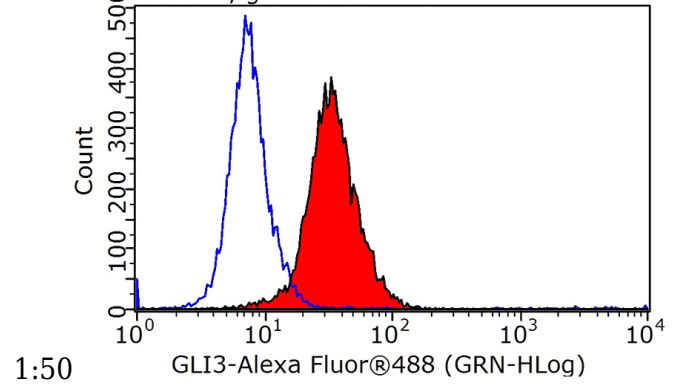
Catalog Number: 111022



IP Result of anti-GLI3-Specific (IP:Catalog No:111022, 4ug; Detection:Catalog No:111022 1:300) with mouse lung tissue lysate 4000ug.



Immunohistochemistry of paraffin-embedded human testis tissue slide using Catalog No:111022(GLI3-Specific Antibody) at dilution of Plot P03, gated on P01.R1



$1 \times 10^6$  HepG2 cells were stained with 0.2ug GLI3-Specific antibody (Catalog No:111022, red) and control antibody (blue). Fixed with 90% MeOH blocked with 3% BSA (30 min). Alexa Fluor 488-conjugated AffiniPure Goat Anti-Rabbit IgG(H+L) with dilution 1:1000.