

# DRIM antibody

Catalog Number: 110022

## Product name

DRIM antibody

## Specificity

Human, Mouse, Rat; other species not tested.

## Antibody description

DRIM Rabbit Polyclonal antibody. Positive IF detected in HeLa cells. Positive IP detected in HeLa cells. Positive WB detected in mouse ovary tissue, HeLa cells. Observed molecular weight by Western-blot: 140 kDa

## Preparation

This antibody was obtained by immunization of Peptide (Accession Number: NM\_014503). Purification method: Antigen affinity purified.

## Formulation

PBS with 0.02% sodium azide and 50% glycerol pH 7.3.

## Storage

Store at -20°C. DO NOT ALIQUOT

## Clonality

Polyclonal

## Ig Type

Rabbit IgG

## Applications

ELISA, WB, IF, IP

## Dilutions

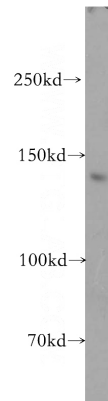
Recommended Dilution:

WB: 1:500-1:5000

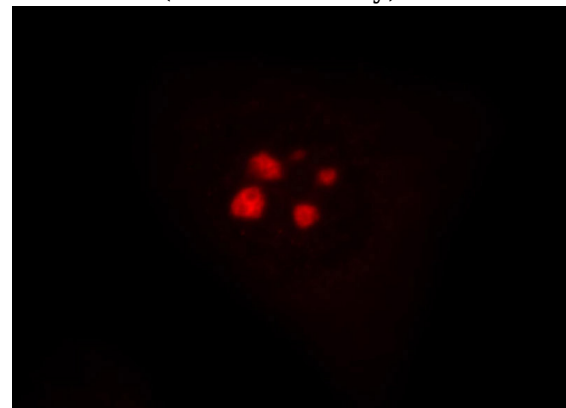
IP: 1:200-1:2000

IF: 1:20-1:200

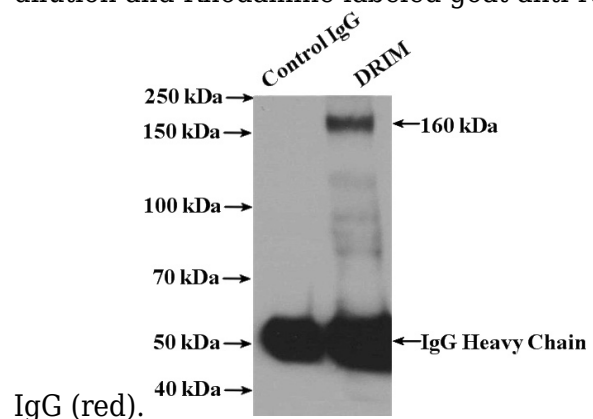
## Validations



mouse ovary tissue were subjected to SDS PAGE followed by western blot with Catalog No:110022(UTP20 antibody) at dilution of 1:1500



Immunofluorescent analysis of HeLa cells, using UTP20 antibody Catalog No:110022 at 1:50 dilution and Rhodamine-labeled goat anti-rabbit



IgG (red).

IP Result of anti-UTP20 (IP:Catalog No:110022, 4ug; Detection:Catalog No:110022 1:800) with HeLa cells lysate 4000ug.