

VANGL2 antibody

Catalog Number: 116712

Product name

VANGL2 antibody

WB: 1:200-1:2000

IP: 1:500-1:5000

Specificity

Human, Mouse, Rat; other species not tested.

IHC: 1:20-1:200

IF: 1:20-1:200

Antibody description

VANGL2 Rabbit Polyclonal antibody. Positive WB detected in HepG2 cells, HT-1080 cells, MCF7 cells, mouse brain tissue, rat brain tissue. Positive IP detected in HepG2 cells. Positive IF detected in HepG2 cells. Positive IHC detected in human stomach tissue. Observed molecular weight by Western-blot: 55-60 kDa, 65-70 kDa

Preparation

This antibody was obtained by immunization of VANGL2 recombinant protein (Accession Number: BC103920). Purification method: Antigen affinity purified.

Formulation

PBS with 0.02% sodium azide and 50% glycerol pH 7.3.

Storage

Store at -20°C. DO NOT ALIQUOT

Clonality

Polyclonal

Ig Type

Rabbit IgG

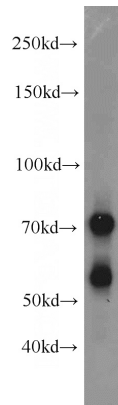
Applications

ELISA, IHC, IP, IF, WB

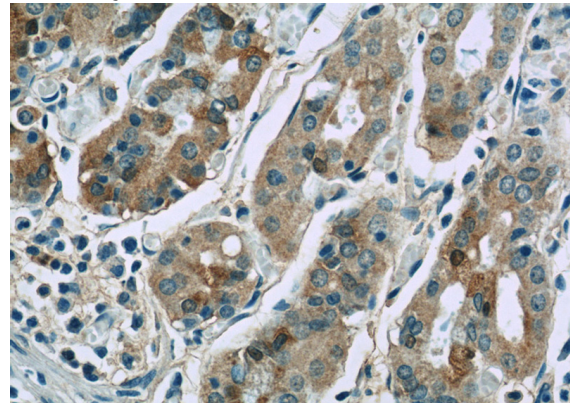
Dilutions

Recommended Dilution:

Validations



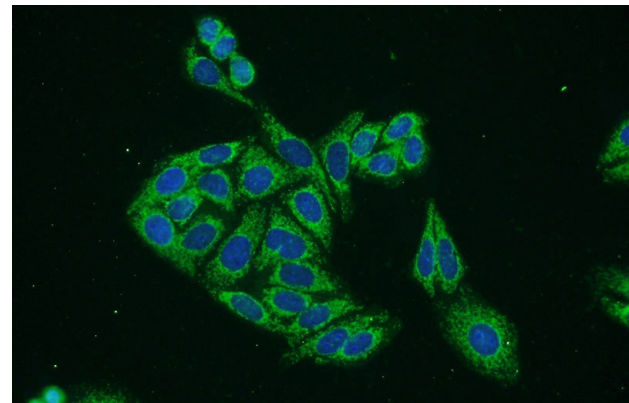
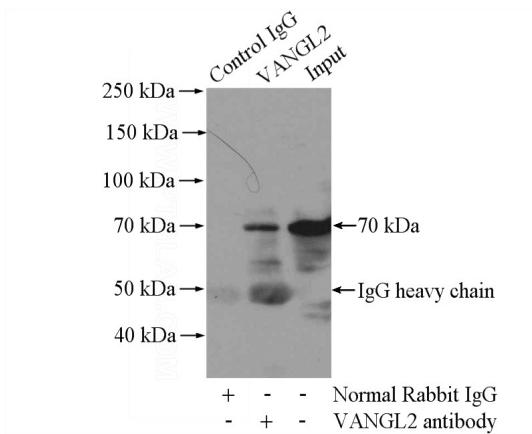
HepG2 cells were subjected to SDS PAGE followed by western blot with Catalog No:116712(VANGL2 antibody) at dilution of 1:600



Immunohistochemistry of paraffin-embedded human stomach slide using Catalog No:116712(VANGL2 Antibody) at dilution of 1:50

VANGL2 antibody

Catalog Number: 116712



IP Result of anti-VANGL2 (IP:Catalog No:116712, 4ug; Detection:Catalog No:116712 1:1000) with HepG2 cells lysate 3600ug.

Immunofluorescent analysis of HepG2 cells using Catalog No:116712(VANGL2 Antibody) at dilution of 1:50 and Alexa Fluor 488-conjugated AffiniPure Goat Anti-Rabbit IgG(H+L)