

Anti-Src Rabbit antibody

Catalog Number: 166712

Product name

Anti-Src Rabbit antibody

Specificity

Human, Mouse, Rat, Hamster

Antibody description

Src Rabbit polyclonal antibody

Preparation

Antigen: The antiserum was produced against synthesized non-phosphopeptide derived from human SRC around the phosphorylation site of Tyrosine 529.

Formulation

10mM PBS with 0.02% sodium azide, 50% glycerol.

Storage

Store at 4°C short term. Store at -20°C long term. Avoid freeze / thaw cycle.

Clonality

Polyclonal

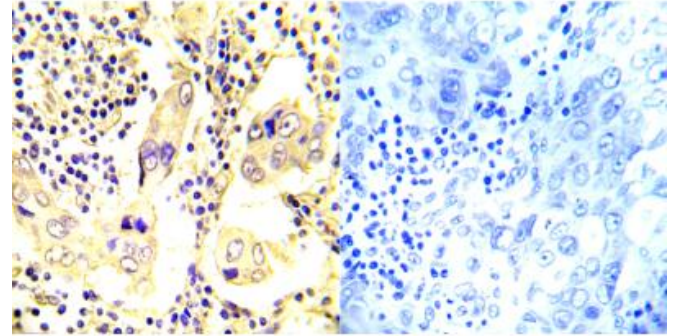
Ig Type

Rabbit IgG

Applications

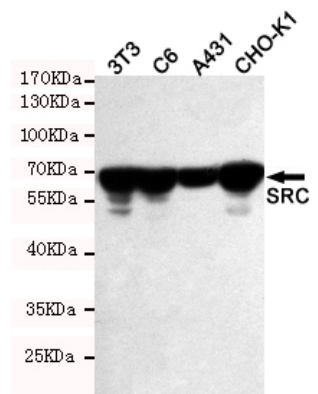
WB, IHC-P

Validations



Peptide - +

Immunohistochemical analysis of paraffin-embedded human breast carcinoma tissue using



SRC (Ab-529) antibody.

Western blot detection of SRC in 3T3, C6, A431 and CHO-K1 cell lysates using SRC rabbit pAb (1:500 diluted). Predicted band size: 60kDa. Observed band size: 60kDa.