

Anti-CIB2 antibody

Catalog Number: 103712

Product name

Anti-CIB2 antibody

Immunogen

[Human CIB2 \(His Tag\) recombinant protein](#)

Specificity

Human CIB2

Antibody description

Rabbit polyclonal to CIB2

Preparation

Produced in rabbits immunized with purified, recombinant Human CIB2 (rh CIB2; O75838; Met 1-Ile 187). CIB2 specific IgG was purified by Human CIB2 affinity chromatography.

Formulation

0.2 µm filtered solution in PBS with 5% trehalose

Storage

This antibody can be stored at 2°C-8°C for one month without detectable loss of activity. Antibody products are stable for twelve months from date of receipt when stored at -20°C to -80°C.

Preservative-Free.

Sodium azide is recommended to avoid contamination (final concentration 0.05%-0.1%). It is toxic to cells and should be disposed of properly. Avoid repeated freeze-thaw cycles.

Clonality

Polyclonal

Ig Type

Rabbit IgG

Applications

ELISA, IHC-P

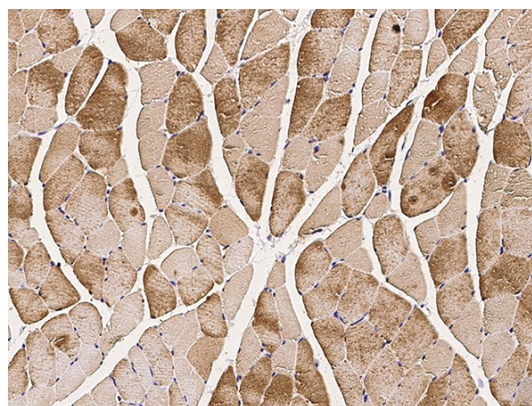
Dilutions

ELISA: 0.1-0.2 µg/mL

This antibody can be used at 0.1-0.2 µg/mL with the appropriate secondary reagents to detect Human CIB2. The detection limit for Human CIB2 is approximately 0.00245 ng/well.

IHC-P: 0.1-2 µg/mL

Validations



CIB2 Antibody, Rabbit PAb, Antigen Affinity Purified, Immunohistochemistry

Immunochemical staining of human CIB2 in human skeletal muscle with rabbit polyclonal antibody (1 µg/mL, formalin-fixed paraffin embedded sections).