

# SLC22A1 antibody



Catalog Number: 115312

## Product name

SLC22A1 antibody

## Specificity

Human, Mouse, Rat; other species not tested.

## Antibody description

SLC22A1 Rabbit Polyclonal antibody. Positive WB detected in mouse liver tissue. Positive IP detected in mouse liver tissue. Observed molecular weight by Western-blot: 61-67 kDa

## Preparation

This antibody was obtained by immunization of SLC22A1 recombinant protein (Accession Number: NM\_003057). Purification method: Antigen affinity purified.

## Formulation

PBS with 0.1% sodium azide and 50% glycerol pH 7.3.

## Storage

Store at -20°C. DO NOT ALIQUOT

## Clonality

Polyclonal

## Ig Type

Rabbit IgG

## Applications

ELISA, WB, IP

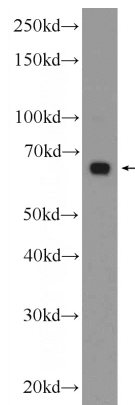
## Dilutions

Recommended Dilution:

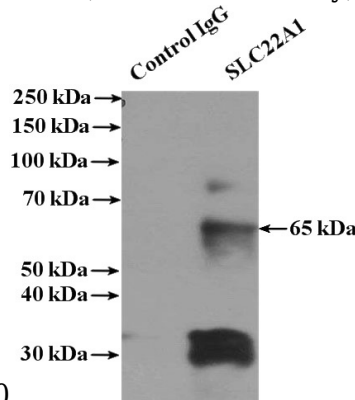
WB: 1:200-1:2000

IP: 1:500-1:5000

## Validations



mouse liver tissue were subjected to SDS PAGE followed by western blot with Catalog No:115312(SLC22A1 Antibody) at dilution of



IP Result of anti-SLC22A1 (IP:Catalog No:115312, 4ug; Detection:Catalog No:115312 1:1000) with mouse liver tissue lysate 4000ug.