

EEF1B2 antibody



Catalog Number: 110312

Product name

EEF1B2 antibody

Specificity

Human, Mouse, Rat; other species not tested.

Antibody description

EEF1B2 Rabbit Polyclonal antibody. Positive WB detected in PC-3 cells, HEK-293 cells, HeLa cells, HepG2 cells, Jurkat cells, mouse kidney tissue, SKOV-3 cells. Positive IHC detected in human pancreas cancer tissue. Observed molecular weight by Western-blot: 34kd

Preparation

This antibody was obtained by immunization of EEF1B2 recombinant protein (Accession Number: NM_021121). Purification method: Antigen affinity purified.

Formulation

PBS with 0.1% sodium azide and 50% glycerol pH 7.3.

Storage

Store at -20°C. DO NOT ALIQUOT

Clonality

Polyclonal

Ig Type

Rabbit IgG

Applications

ELISA, WB, IHC

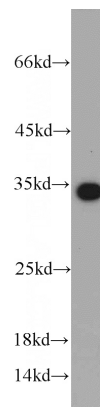
Dilutions

Recommended Dilution:

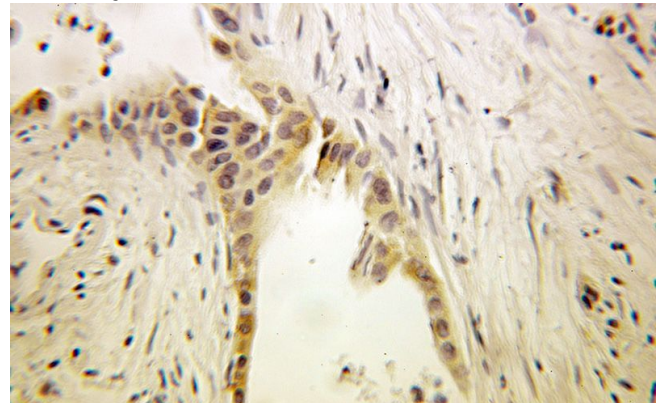
WB: 1:500-1:5000

IHC: 1:20-1:200

Validations



PC-3 cells were subjected to SDS PAGE followed by western blot with Catalog No:110312(EEF1B2 antibody) at dilution of 1:1000



Immunohistochemical of paraffin-embedded human pancreas cancer using Catalog No:110312(EEF1B2 antibody) at dilution of 1:100 (under 25x lens)