

# C17orf28 antibody



Catalog Number: 108612

## Product name

C17orf28 antibody

## Immunogen

[Human C17orf28 Recombinant protein \(His tag\)](#)

## Specificity

Human, Mouse, Rat; other species not tested.

## Antibody description

C17orf28 Rabbit Polyclonal antibody. Positive IP detected in mouse brain tissue. Positive WB detected in fetal human brain tissue, human brain tissue. Positive IF detected in HepG2 cells, Hela cells. Observed molecular weight by Western-blot: 60kd, 89kd

## Preparation

This antibody was obtained by immunization of C17orf28 recombinant protein (Accession Number: NM\_030630). Purification method: Antigen affinity purified.

## Formulation

PBS with 0.02% sodium azide and 50% glycerol pH 7.3.

## Storage

Store at -20°C. DO NOT ALIQUOT

## Clonality

Polyclonal

## Ig Type

Rabbit IgG

## Applications

ELISA, IF, IP, WB

## Dilutions

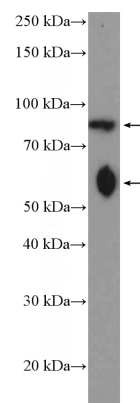
Recommended Dilution:

WB: 1:500-1:5000

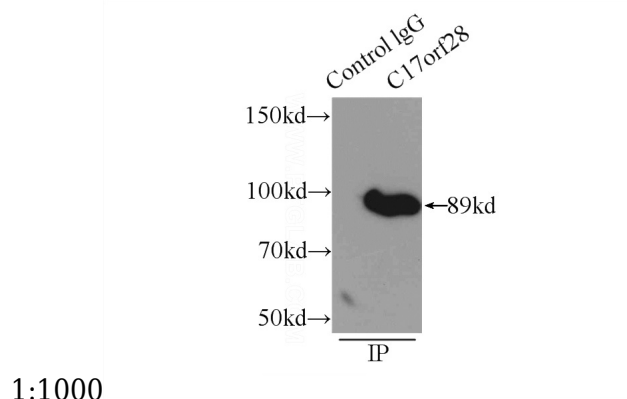
IP: 1:200-1:2000

IF: 1:10-1:100

## Validations



fetal human brain tissue were subjected to SDS PAGE followed by western blot with Catalog No:108612(C17orf28 Antibody) at dilution of



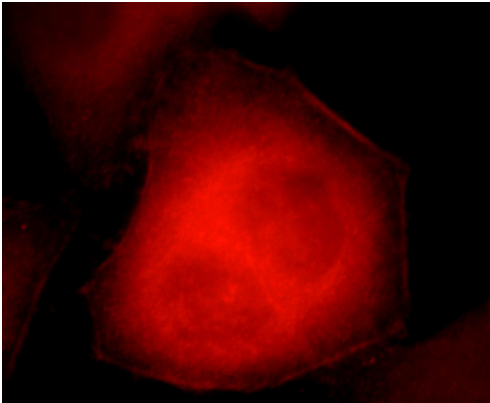
1:1000

IP Result of anti-C17orf28 (IP:Catalog No:108612, 3ug; Detection:Catalog No:108612 1:500) with mouse brain tissue lysate 10000ug.

# C17orf28 antibody

Catalog Number: 108612

---



Immunofluorescent analysis of HepG2 cells, using C17orf28 antibody Catalog No:108612 at 1:25 dilution and Rhodamine-labeled goat anti-rabbit IgG (red).