

POU2F1 Polyclonal Antibody



Catalog Number: 166612

Product name

POU2F1 Polyclonal Antibody

Specificity

Human, Mouse, Rat

Antibody description

Polyclonal antibody to POU2F1

Preparation

Antigen: Recombinant fusion protein containing a sequence corresponding to amino acids 15-290 of human POU2F1 (NP_001185712.1).

Formulation

PBS with 0.02% sodium azide, 50% glycerol, pH7.3.

Storage

Store at -20°C. Avoid freeze / thaw cycles.

Clonality

Polyclonal

Ig Type

Rabbit IgG

Applications

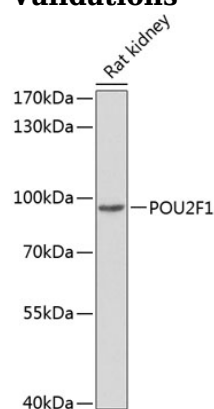
WB, IHC

Dilutions

WB 1:500 - 1:2000

IHC 1:50 - 1:100

Validations



Western blot - POU2F1 Polyclonal Antibody

Western blot analysis of extracts of rat kidney, using POU2F1 antibody at 1:1000 dilution. Secondary antibody: HRP Goat Anti-Rabbit IgG (H+L) at 1:10000 dilution. Lysates/proteins: 25ug per lane. Blocking buffer: 3% nonfat dry milk in TBST. Detection: ECL Basic Kit. Exposure time: 15s.