

# RBM4 antibody

Catalog Number: 114612

## Product name

RBM4 antibody

## Specificity

Human, Mouse, Rat; other species not tested.

## Antibody description

RBM4 Rabbit Polyclonal antibody. Positive IP detected in mouse heart tissue. Positive WB detected in mouse brain tissue, human brain tissue, human heart tissue, human kidney tissue. Positive IF detected in HepG2 cells. Positive IHC detected in human gliomas tissue, human lung cancer tissue. Observed molecular weight by Western-blot: 37-40 kDa

## Preparation

This antibody was obtained by immunization of RBM4 recombinant protein (Accession Number: BC021120). Purification method: Antigen affinity purified.

## Formulation

PBS with 0.1% sodium azide and 50% glycerol pH 7.3.

## Storage

Store at -20°C. DO NOT ALIQUOT

## Clonality

Polyclonal

## Ig Type

Rabbit IgG

## Applications

ELISA, WB, IHC, IF, IP

## Dilutions

Recommended Dilution:

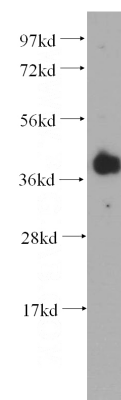
WB: 1:500-1:5000

IP: 1:500-1:5000

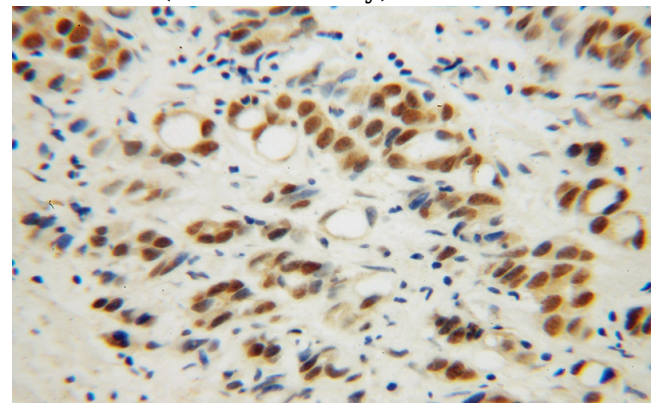
IHC: 1:20-1:200

IF: 1:20-1:200

## Validations



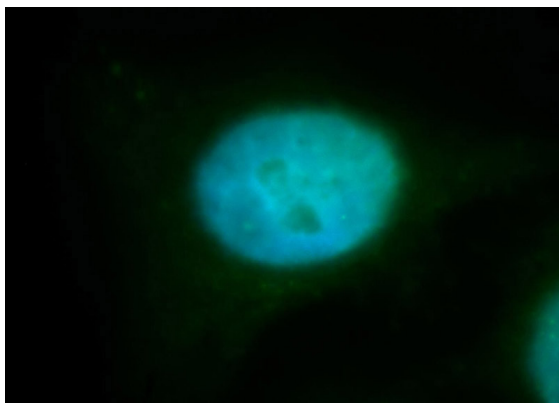
mouse brain tissue were subjected to SDS PAGE followed by western blot with Catalog No:114612(RBM4 antibody) at dilution of 1:500



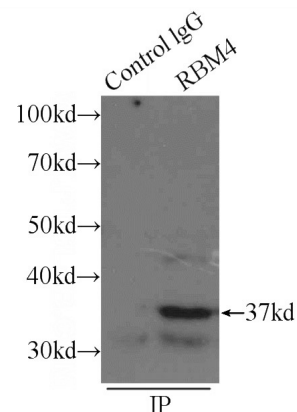
Immunohistochemical of paraffin-embedded human gliomas using Catalog No:114612(RBM4 antibody) at dilution of 1:50 (under 40x lens)

# RBM4 antibody

Catalog Number: 114612



Immunofluorescent analysis of HepG2 cells, using RBM4 antibody Catalog No:114612 at 1:100 dilution and FITC-labeled donkey anti-rabbit IgG(green). Blue pseudocolor = DAPI (fluorescent



DNA dye).

IP Result of anti-RBM4 (IP:Catalog No:114612, 3ug; Detection:Catalog No:114612 1:1000) with mouse heart tissue lysate 4000ug.