

# Human CREB3L1 / OASIS (aa 396-519, His Tag) recombinant protein



Catalog Number: 502612

## General Information

### Gene Name Synonym

Old astrocyte specifically-induced substance;  
Processed cyclic AMP-responsive element-binding  
protein 3-like protein 1

### Protein Construction

A DNA sequence encoding the human CREB3L1  
(Q96BA8-1) (Glu396-Ser519) was expressed with a  
polyhistidine tag at the C-terminus.

### Organism

Human

### Expression Host

Human Cells

## QC Testing

### Purity

> 95 % as determined by SDS-PAGE

### Endotoxin

< 1.0 EU per  $\mu\text{g}$  of the protein as determined by  
the LAL method

### Stability

Samples are stable for up to twelve months from  
date of receipt at  $-70^{\circ}\text{C}$

### Predicted N terminal

Glu 396

### Molecular Mass

The recombinant human CREB3L1 consists of 135  
amino acids and predicts a molecular mass of 15.2  
KDa. It migrates as an approximately 21-31 KDa  
band in SDS-PAGE under reducing conditions.

### Formulation

Lyophilized from sterile PBS, PH 7.4.

1. 5 % trehalose and mannitol are added as  
protectants before lyophilization.
2. Please contact us for any concerns or special  
requirements.

## Usage Guide

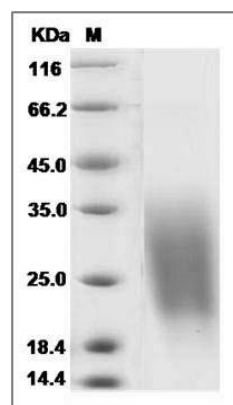
### Storage

Store it under sterile conditions at  $-20^{\circ}\text{C}$  to  $-80^{\circ}\text{C}$ .  
It is recommended that the protein be aliquoted  
for optimal storage. Avoid repeated freeze-thaw  
cycles.

### Reconstitution

Adding sterile water, prepare a stock solution of  
0.25 mg/ml. Concentration is measured by UV-Vis.

### SDS-PAGE



Human CREB3L1 / OASIS Protein (aa 396-519,  
His Tag) SDS-PAGE