

CHCHD2 antibody



Catalog Number: 109212

Product name

CHCHD2 antibody

Immunogen

[Human CHCHD2 Recombinant protein \(GST tag\)](#)

Specificity

Human; other species not tested.

Antibody description

CHCHD2 Rabbit Polyclonal antibody. Positive IF detected in HepG2 cells. Positive IP detected in HepG2 cells. Positive WB detected in HepG2 cells, HT-1080 cells, human adrenal gland tissue. Observed molecular weight by Western-blot: 16-18 kDa

Preparation

This antibody was obtained by immunization of CHCHD2 recombinant protein (Accession Number: NM_016139). Purification method: Antigen affinity purified.

Formulation

PBS with 0.02% sodium azide and 50% glycerol pH 7.3.

Storage

Store at -20°C. DO NOT ALIQUOT

Clonality

Polyclonal

Ig Type

Rabbit IgG

Applications

ELISA, IF, IP, WB

Dilutions

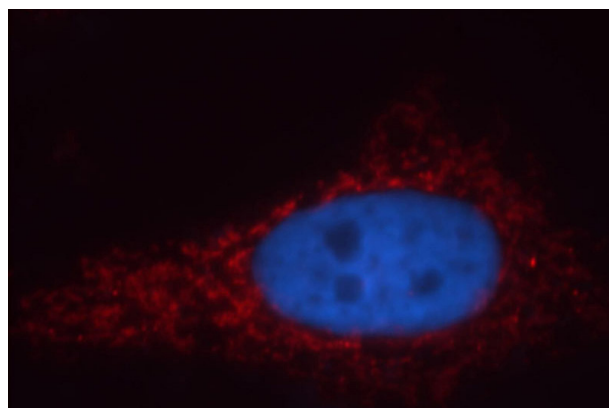
Recommended Dilution:

WB: 1:200-1:2000

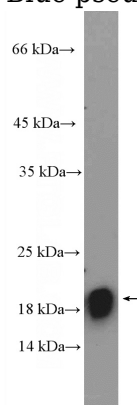
IP: 1:200-1:2000

IF: 1:10-1:100

Validations



Immunofluorescent analysis of HepG2 cells, using CHCHD2 antibody Catalog No:109212 at 1:25 dilution and Rhodamine-labeled goat anti-rabbit IgG (red). Blue pseudocolor = DAPI (fluorescent

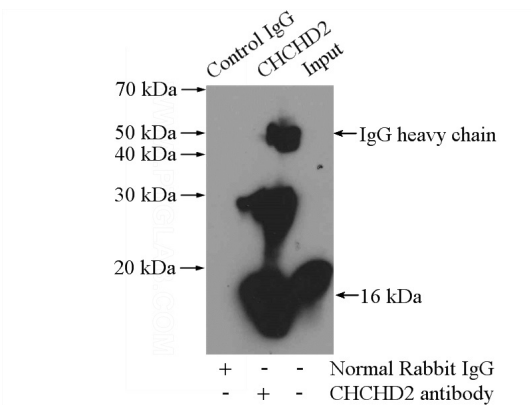


DNA dye).

HepG2 cells were subjected to SDS PAGE followed by western blot with Catalog No:109212(CHCHD2 Antibody) at dilution of 1:600

CHCHD2 antibody

Catalog Number: 109212



IP Result of anti-CHCHD2 (IP:Catalog No:109212, 4ug; Detection:Catalog No:109212 1:500) with HepG2 cells lysate 2800ug.