

Fibrinogen gamma chain antibody



Catalog Number: 107212

Product name

Fibrinogen gamma chain antibody

IHC: 1:20-1:200

IF: 1:20-1:200

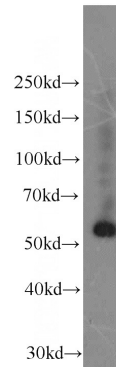
Specificity

Human; other species not tested.

Validations

Antibody description

Fibrinogen gamma chain Mouse Monoclonal antibody. Positive IHC detected in human liver tissue, human kidney tissue. Positive IF detected in L02 cells. Positive WB detected in L02 cells. Observed molecular weight by Western-blot: 52 kDa



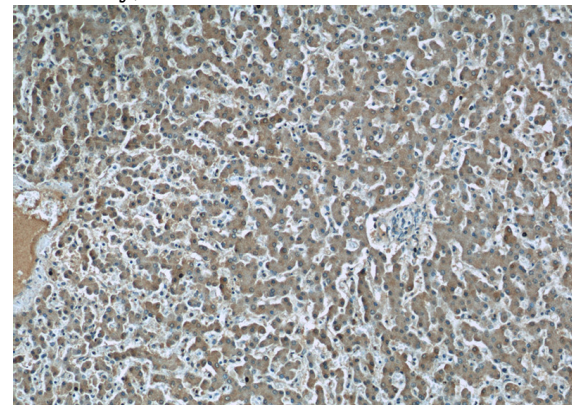
Preparation

This antibody was obtained by immunization of Fibrinogen gamma chain recombinant protein (Accession Number: NM_000509). Purification method: Thiophilic Affinity Chromatography.

L02 cells were subjected to SDS PAGE followed by western blot with Catalog No:107212(FGG Antibody) at dilution of 1:1000

Formulation

PBS with 0.02% sodium azide and 50% glycerol pH 7.3.



Storage

Store at -20°C. DO NOT ALIQUOT

Clonality

Monoclonal

Immunohistochemistry of paraffin-embedded human liver tissue slide using Catalog No:107212(FGG Antibody) at dilution of 1:50 (under 10x lens)

Ig Type

Mouse IgM

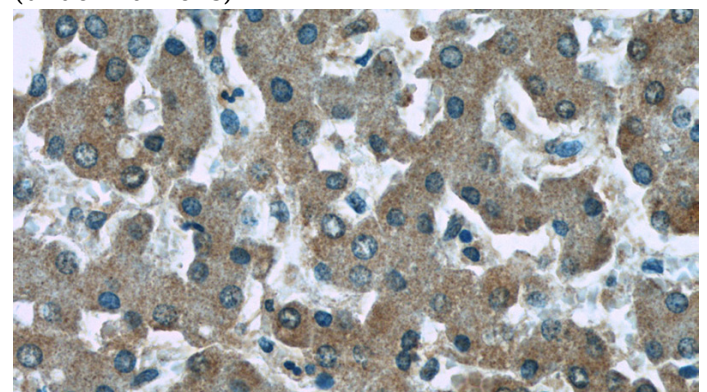
Applications

ELISA, WB, IHC, IF

Dilutions

Recommended Dilution:

WB: 1:500-1:5000



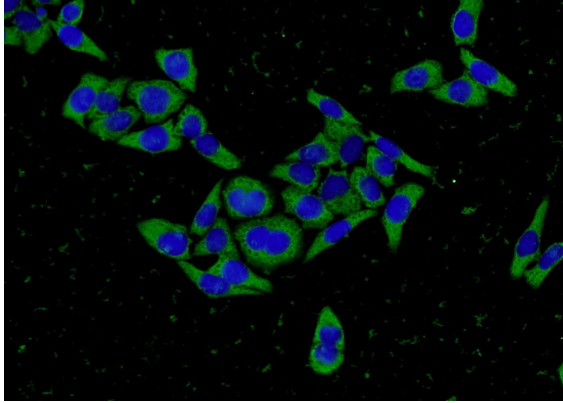
Immunohistochemistry of paraffin-embedded

Fibrinogen gamma chain antibody



Catalog Number: 107212

human liver tissue slide using Catalog No:107212(FGG Antibody) at dilution of 1:50 (under 40x lens)



Immunofluorescent analysis of L02 cells using Catalog No:107212(FGG Antibody) at dilution of 1:50 and Alexa Fluor 488-conjugated AffiniPure Goat Anti-Mouse IgG(H+L)