

# Serum amyloid P component antibody



Catalog Number: 115212

## Product name

Serum amyloid P component antibody

IHC: 1:20-1:200

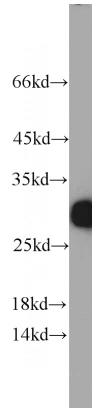
## Specificity

Human; other species not tested.

## Antibody description

Serum amyloid P component Rabbit Polyclonal antibody. Positive IHC detected in human spleen tissue. Positive WB detected in human kidney tissue. Observed molecular weight by Western-blot: 27-29 kDa

## Validations



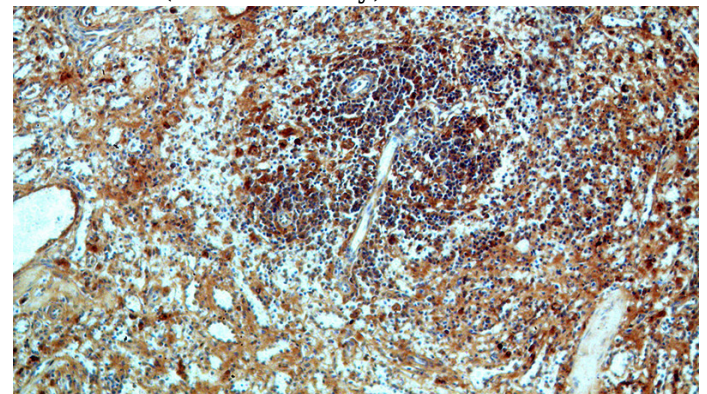
## Preparation

This antibody was obtained by immunization of Serum amyloid P component recombinant protein (Accession Number: NM\_001639). Purification method: Antigen affinity purified.

human kidney tissue were subjected to SDS PAGE followed by western blot with Catalog No:115212(APCS antibody) at dilution of 1:1000

## Formulation

PBS with 0.02% sodium azide and 50% glycerol pH 7.3.



## Storage

Store at -20°C. DO NOT ALIQUOT

## Clonality

Polyclonal

## Ig Type

Rabbit IgG

## Applications

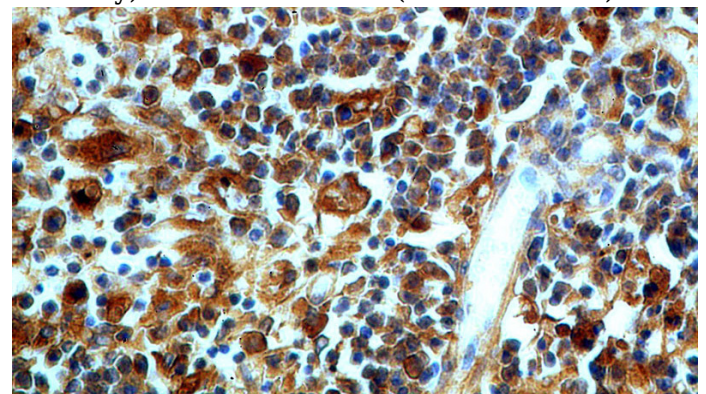
ELISA, IHC, WB

## Dilutions

Recommended Dilution:

WB: 1:500-1:5000

Immunohistochemical of paraffin-embedded human spleen using Catalog No:115212(APCS antibody) at dilution of 1:50 (under 10x lens)



Immunohistochemical of paraffin-embedded human spleen using Catalog No:115212(APCS antibody) at dilution of 1:50 (under 40x lens)