

# PRODH antibody



Catalog Number: 114212

## Product name

PRODH antibody

## Specificity

Human, Mouse; other species not tested.

## Antibody description

PRODH Rabbit Polyclonal antibody. Positive IHC detected in human cerebellum tissue, human skeletal muscle tissue. Positive WB detected in mouse liver tissue, mouse kidney tissue. Observed molecular weight by Western-blot: 56 kDa, 66 kDa

## Preparation

This antibody was obtained by immunization of PRODH recombinant protein (Accession Number: NM\_001368250). Purification method: Antigen Affinity purified.

## Formulation

PBS with 0.02% sodium azide and 50% glycerol pH 7.3.

## Storage

Store at -20°C. DO NOT ALIQUOT

## Clonality

Polyclonal

## Ig Type

Rabbit IgG

## Applications

ELISA, WB, IHC

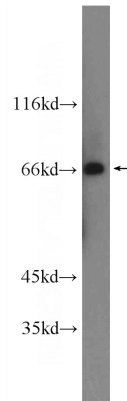
## Dilutions

Recommended Dilution:

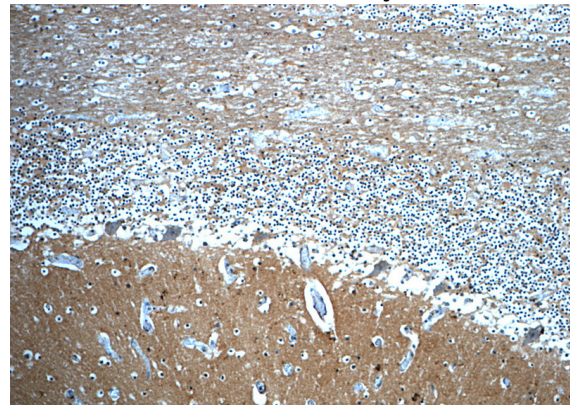
WB: 1:500-1:5000

IHC: 1:20-1:200

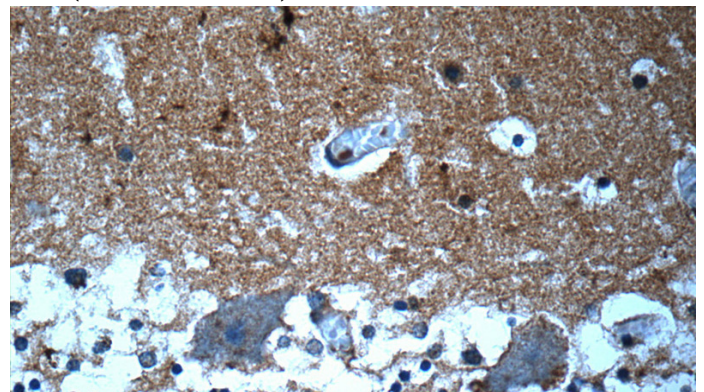
## Validations



mouse liver tissue were subjected to SDS PAGE followed by western blot with Catalog No:114212(PRODH antibody) at dilution of 1:1000



Immunohistochemistry of paraffin-embedded human cerebellum slide using Catalog No:114212(PRODH Antibody) at dilution of 1:50(under 10x lens)



Immunohistochemistry of paraffin-embedded human cerebellum slide using Catalog No:114212(PRODH Antibody) at dilution of

# PRODH antibody



Catalog Number: 114212

---

1:50(under 40x lens)